

*Your Positive
Impact in 2022*

SPIRIT OF GIVING



Advent Health
Foundation | Central Florida

Upcoming Events

October 8, 2023

Pink On Parade 5K

Join us in-person or virtually for AdventHealth's Pink on Parade 5K as we honor the incredible individuals and families in our community who have been touched by breast cancer. Together, we'll raise awareness, celebrate survivors, and honor those we've lost. Visit PinkOnParade.com for more information.

November 19, 2023

AdventHealth Golden Gala XLII

Presented by Osteopathic Foundation of East Orlando

Join us in the Steinmetz Hall at Dr. Phillips Center for the Performing Arts for an exclusive, black-tie event filled with networking, fellowship, and entertainment complete with a gourmet meal, auction items, and a commitment to extending hope and healing. Visit AdventHealthGoldenGala.com for details.

Table of Contents

- 4 **2022 Impact Report**
- 5 **Your Generosity at Work in 2022**
- 6 **22 Moments in 2022**
- 8 **The Human Right to Feel Whole**
- 10 **If I Can, I Will**
- 11 **Golden Gala XLI**
- 12 **Whole Care for the Whole Child**
- 13 **Empowering Children to be Their Whole Self**
- 14 **Opening Their Home and Hearts to Nurses**
- 15 **Giving Close to the Heart**
- 16 **Core Events**
- 18 **Volunteers of the Month**
- 20 **Lifetime Donor Hall of Fame**
- 27 **2022 Donors of \$5,000+**
- 29 **Legacy Society Donors**
- 31 **Raising Hope**
- 32 **The Well**

Executive Welcome

Dear Friends and Family of AdventHealth,

It is my honor and privilege to serve as AdventHealth's first female Executive Board Chair, a role I do not take lightly, as I realize that lives can be forever changed by the powerful work of philanthropy.

I think of our caregivers working tirelessly every day to care for our community, our friends, and our families; and I am motivated to do more to support them, to give more to help. I think of you, our board members, donors, and advocates who are giving of yourselves so generously, and I am moved by all you do. THANK YOU!

This newsletter shares the joy of giving - such powerful stories of your generosity at work. I see these stories in action every time I visit our hospitals, so please be encouraged that your efforts are touching lives in a positive way. Medical science is amazing and makes advances and strides every day. I am thrilled to know that we are helping move the needle. We can do hard things, but we can also do GREAT things together. I am so proud of the work of our Foundation family and look forward to continuing to partner with all of you.

Give meaningfully, give often, give deeply, and encourage others to give! Bless you and thank you,

"I have found that among its other benefits, giving liberates the soul of the giver."

- Maya Angelou

Warmly,



Brea Weiss

Executive Board Chair | AdventHealth Foundation Central Florida



ON THE COVER

The War in Ukraine shook our very core and in response, an outpouring of support was provided to our Global Missions team to cover essential needs for our partners on the ground in Ukraine. View how much was raised and learn more about this effort on pages 8-9.

Meet Our Team

Dear AdventHealth Family,

I am continually inspired by the ways each of you answer the call to support AdventHealth's healing mission. In my more than 15 years of service at AdventHealth, I have witnessed your dedication to embracing and responding to the needs of people in our community and beyond.

Throughout 2022 you played a vital role in Extending the Healing Ministry of Christ, not only in Central Florida but across the globe. I cannot thank you enough for your continued support and generosity.

Your incredible philanthropic gifts and the Foundation's outstanding team enable AdventHealth to provide whole person care—mind, body, and spirit—to everyone we serve. I'm looking forward to what we can achieve together in 2023!

Sincerely,



David Collis

President | AdventHealth Foundation Central Florida



Jennifer McGreevy
Vice President



Robert Wahlers
Vice President



Tom Kapusta
Executive Director



Roel Yambao
Chief Operating Officer



Rebecca Becker
Director, Donor Relations



Ayslinn Husebo
Director, Communications
and Annual Giving



Jami Boles
Senior Manager, Events



Patricia Bornstein
Senior Manager, Development

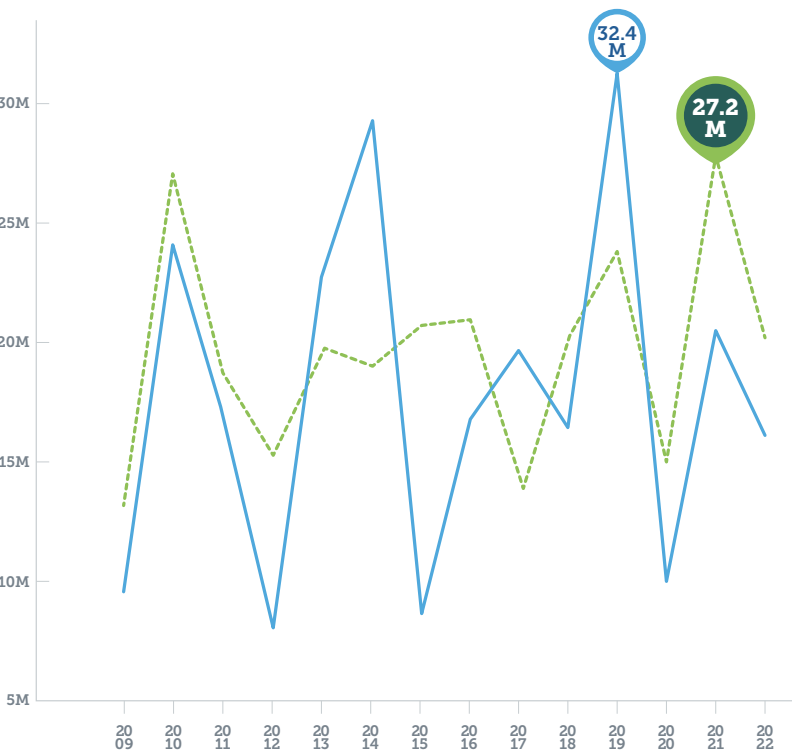
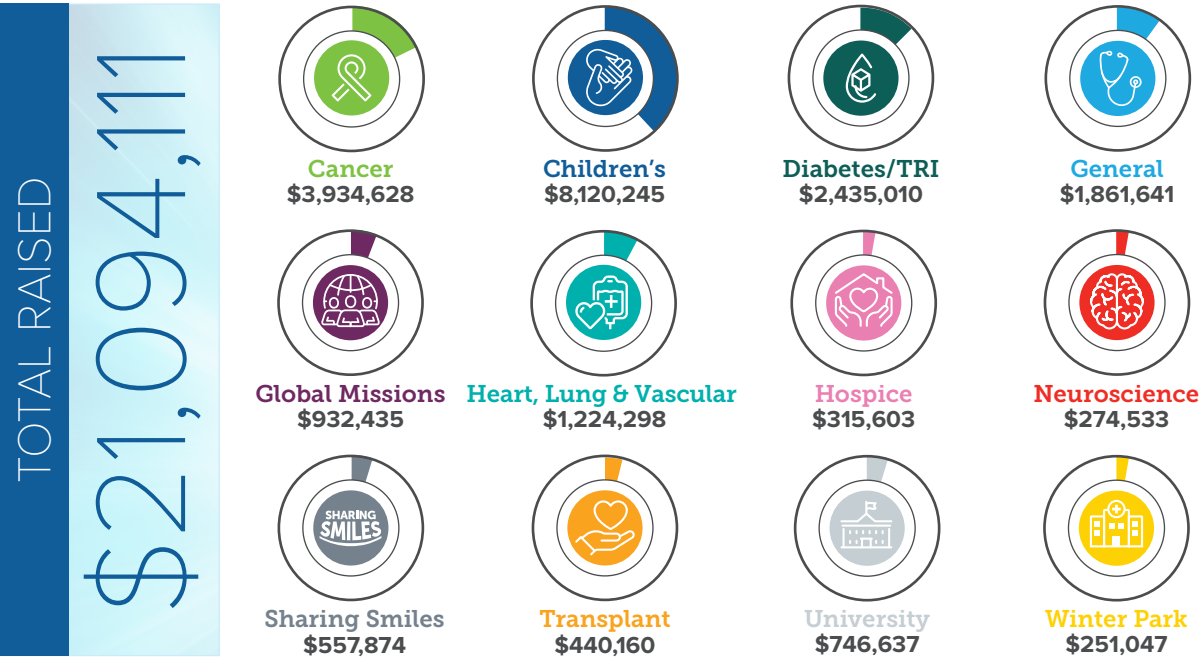


Elaine Kessinger
Senior Manager, Donor Relations



Courtney Staup
Senior Manager, Development

2022 Impact Report



Funds Distribution

Since 2009, AdventHealth Foundation Central Florida has distributed more than \$219 million to support hospital programs and services. Distributions in a given year include donations received over several prior years for a project. One hundred percent of every dollar donated to AdventHealth Foundation Central Florida directly impacts our community.

Distribution

Revenue (Fundraising Report)

Your Generosity at Work in 2022

AdventHealth CANCER Institute



20,000+
cancer diagnoses

are found across AdventHealth's
Florida network of care each year

\$400,000
in financial assistance

provided to cancer patients
at AdventHealth

AdventHealth HEART, LUNG and VASCULAR Institute

72,000+
patients

treated annually

1,000
Trina Hidalgo patients

treated for free each year



AdventHealth for CHILDREN



142
students

enrolled at the West Lakes
Early Learning Center

\$109,000
in financial assistance

provided to
45 families

AdventHealth DIABETES Institute

337
academic scholarships

awarded to individuals managing
Type 1 Diabetes and other
metabolic diseases

AdventHealth RESEARCH Institute

905
active clinical studies



AdventHealth UNIVERSITY

111
students
received scholarship awards
from charitable funds

COUNTRIES SERVED



Global Missions

- Global Footprints are within **14 countries** across **five continents**
- Made over **70 shipments** of medical supplies and equipment to **23 different countries**

AdventHealth Sharing Smiles

- **Seven trips to four countries** to perform cleft lip and palate surgeries along with dentistry and pediatric rehabilitation services

GENEROSITY CHAMPIONS

Employee Giving Program



5,665
team members

gave a total of **\$1,265,828**
to support various programs
at AdventHealth

TWENTY TWO MOMENTS IN 2022



Sun Life Grant
\$50k for AdventHealth Healthy Weight and Wellness program



Melissa's Race
\$85k for Brain Cancer Research



Wyatt and Janell Scott
\$100k for Pediatric Rehab



Clays4Heart
\$100k for Trina Hidalgo Heart Care Center



SkinnerStrong Foundation Golf Tournament
\$10k for AdventHealth for Children



Christmas in July
\$11k for AdventHealth for Children



AHU30for30
\$10k for AdventHealth University



Brookestrong Foundation
\$25k for AdventHealth Transplant Institute



Happy Hearts Fundraiser
\$500k for West Lakes Early Learning Center



Enchantment Ball
\$25k for AdventHealth for Children



Meadows & Ohly, LLC

\$75k for Neuroscience Institute
and Rothman Orthopaedics



Lady Track Shack

\$30k for Breast Cancer



GR8 to DON8

\$159k for Transplant Patients



Pink Out

\$34k for Breast Cancer



ELC Golf Tournament

\$45k for West Lakes Early Learning Center



Dr. Douglas Gearity, MD

\$1M for Women's OBGYN
Residency Program



Driving for Men's Health

\$15k for Cancer Research



Fire in the Park

\$20k for AdventHealth for Children



CES Golf Tournament

\$50k for AdventHealth Cancer Institute



Dena and Andy Jalbert

\$250k for Heart, Lung and
Vascular Institute



Jane's Room Foundation

\$83.5k for Grieving Parents and Families



Day of Giving

\$43k for AdventHealth for Children

The Human Right to Feel Whole

With over 80,000 team members in our workforce and countless other philanthropic supporters, AdventHealth's amazing global humanitarian impact is no surprise. In 2022, our world witnessed several catastrophic events that left thousands in great need, even desolate. Our team, united under one mission, did not hesitate to respond with relief efforts.

Bringing Hope and Healing to Ukraine

In February 2022, rumors of war between Russia and Ukraine began to spread. To the world's horror, Russia invaded Ukraine in an unprovoked attack, driving thousands away from their homes.

Our Global Missions team acted quickly, raising more than \$100,000 in 48 hours. In a letter to employees, AdventHealth President and CEO, Terry Shaw promised that 100 percent of team member donations would go quickly and directly to people in need.

AdventHealth partnered with Angelia Clinic in Kyiv to provide free medical care and with the Ukrainian Seventh-day Adventist Church and Adventist Development & Relief Agency

(ADRA) to cover basic supplies for displaced families in western Ukraine.

Angelia Clinic's doctors, nurses, dentists, therapists, and psychologists provided compassionate, wholistic care that aligned with AdventHealth's healing mission.

By June, the united efforts of more than **2,200 people raised over \$230,000** for humanitarian relief. AdventHealth team members donated through payroll deductions as well as online.

As displaced refugees and families left their communities seeking safety, the need for food drastically increased. On Saturday, May 21, over 600 AdventHealth team members and community volunteers from Celebration area churches gathered at AdventHealth Celebration's Nicholson Center to pack 200,000 meals to deliver to Ukrainian refugees. "We had people from everywhere, families from the little children to the grandmothers. God just multiplied the loaves and the fishes — literally," shared Adriana Pasos, Spiritual Ambassador Coordinator for AdventHealth in Central Florida.

Rallying to Help Kentucky Flood Victims

AdventHealth's impact also extended to catastrophes that happened closer to home. Between July 25 and July 30, a series of storms brought heavy rain and flooding to eastern Kentucky resulting in 39 deaths and widespread damage to nearby communities.

One of the areas hit hardest by the flooding was near AdventHealth Manchester and one of our primary care clinics. While neither the hospital nor the clinic suffered damage, three team members experienced the total loss of their homes and vehicles, while at least 12 others suffered other significant losses.



**600 volunteers, \$75k, and over
200,000 PACKED MEALS**



RAISED \$120,152 for relief efforts in Kentucky helping 262 residents

AdventHealth Manchester leaders quickly partnered with FEMA and the Kentucky National Guard to aid the affected communities. The hospital, along with the local health department, gathered water, arranged transportation for patients and team members, and raised funds for basic needs, such as clothing, shoes, personal care products, non-perishable foods and more.

“While physical distance separates us, we are united in our mission of Extending the Healing Ministry of Christ. In times of disaster and tragedy, I am humbled by the number of you who reach out asking, ‘How can I help?’”

— Terry Shaw, AdventHealth President and CEO

A Mission Close to Home

Catastrophe came right to our doors on September 28, when Hurricane Ian made landfall as a Category 4 hurricane on Florida’s Gulf Coast. One of the most powerful hurricanes to hit the U.S. in decades — shy from ranking as a Category 5 hurricane by only 2mph — Hurricane Ian claimed over 148 lives and caused nearly \$112.9 billion in damage.

In response to the hurricane’s destruction, thousands of AdventHealth team members across the state reported to work to ensure hospitals could stay open for those who needed care.

In West Florida, team members weathered the storm with a “hurricane survival cart” filled with freshly baked cookies. AdventHealth CEOs helped prepare meals for the staff when the cafeteria needed extra support. Team members stayed true to the whole person care model and led groups through breathing exercises, meditation, and prayer. Puzzles, coloring, and games provided much needed mental breaks and relaxation.

AdventHealth Orlando team members worked around the clock delivering babies, performing surgeries, and helping with maintenance and environmental services to keep the facilities safe for our patients and families.

Caring for others is an awesome responsibility, one that is fully embraced by AdventHealth — globally as well as locally. The generosity of donors and employees ensures that support for communities, wherever they are located, will be available.



The Hope Fund distributed nearly \$90K TO SUPPORT 90 employees in Central Florida after Hurricane Ian

If I Can, I Will

"I have to continue to fight, and that's what I have been doing for ten years now." With the help of her husband and AdventHealth Cancer Institute's Dr. Robert Holloway, Susan Provost has never had to face cancer alone.

Like Susan and many other cancer survivors, an ovarian cancer diagnosis can be a lifelong battle. "The day she was diagnosed, we weren't sure what our journey was going to be like. Once we met Dr. Holloway, we felt better about it because of the hope that he instilled in us," shared Ed, Susan's husband.

Over the past ten years, Susan has experienced a series of relapses and recurrences, with her most recent in 2020. After trying various cancer treatments, she began running out of options. Unwilling to



Susan and Ed Provost

give up, Dr. Holloway recommended Susan participate in a clinical trial as her next step in treatment.

This particular study offered Susan a new found hope for the future, **"this clinical trial gives me hope and willingness to fight."**

Though the primary goal of cancer research is to find a cure, a secondary and equally important goal is to improve the quality of life of cancer patients. Susan shared that, **"for as long as I can, I will."**

This year, in Florida alone, 152,600 new cancers were diagnosed. AdventHealth is advancing scientific discovery to increase the quality of life for cancer patients.

The support given to AdventHealth Cancer Institute has helped countless patients and families like Susan receive outstanding care and increase access to advanced clinical research, making today's clinical trials become tomorrow's standard of care.

Golden Gala XLI

Providing whole person care to cancer patients was at the heart of AdventHealth's signature event in 2022. Over 1,000 guests attended Golden Gala 41 in support of AdventHealth's healing mission.

The weekend was filled with incredible experiences, including an exclusive gourmet dinner, Golf Championship, and a



RAISED OVER \$1.2M
for cancer research
and additional programs and
services at AdventHealth

special performance by NeedToBreathe. The evening served as a reminder and promise to everyone who attended as well as our patients, for as long as we can, we will.



Whole Care for the Whole Child



Gage is a nine-year-old boy who loves gaming, Hot Wheels, and Legos. He is also a treasured patient at AdventHealth for Children. When Gage was born, he was diagnosed with Neurofibromatosis type 1 (NF1), a genetic condition that causes tumors to grow along the nerves. Gage has also been diagnosed with scoliosis and ADHD, making him in need of comprehensive, ongoing care.

Like Gage, patients at AdventHealth for Children sometimes come with complex medical conditions. In response to this need and with an initial gift from the Adler Family Foundation, AdventHealth developed the Adler Coordinated Care for Kids Program (CCK) that serves as the medical home for children with long-term chronic conditions and complex illnesses requiring more than two sub-specialties.

Diagnoses and treatment planning for children with complex illnesses typically takes weeks, months, or even years as the patient navigates their care between various specialists. CCK provides a



RAISED \$1.36M
for CCK in 2022

seamless process led by a team of care coordinators and specialists who review the child's diagnosis and develop a treatment plan in one location at one time.

Successfully treating patients with extensive, specialized care requires consistent philanthropic investments. We were blessed to receive an anonymous **\$1 million dollar donation** in 2022 allotted to CCK's world-class pediatric head and neck cancer and craniomaxillofacial anomalies program led by Dr. Joseph Lopez. A program of this caliber is the first of its kind in Florida. There are approximately 2,000 children diagnosed annually with these diseases in the U.S.

On October 23, YouTuber BriannaPlayz participated in a Play it Forward event to support children receiving care at CCK. **Over \$10,000 was raised** through this effort and the Hughes family's matching gift. **The Hughes Family Foundation also donated \$350,000** to provide continued support to the program.

Your generosity has ensured quality care is provided to children and families in need like Gage. Gage's mom, Heather, shared,

"If we didn't have the convenience and consistency of a centralized team when it comes to big decisions – I just can't quantify the amount of worry that's lifted regarding my child, his treatment, and the connection with all his docs."

Empowering Children to be Their Whole Self

AdventHealth aims to provide whole-person care to children and families across our community. The West Lakes Early Learning Center (ELC) is an innovative program that delivers high-quality, affordable early childhood education as well as comprehensive health, wellness, and social services to families and their children at six weeks to five years of age.

The program is led by Alfreda Clark, Center Director, and Maria Katz, Director of Education, and brought together by community partners Bainum Family Foundation, AdventHealth, Lift Orlando, and Primrose Schools.

In honor of their 40th Anniversary, Primrose Schools launched the Happy Hearts Fundraiser, to raise funds to support educational and health equity for more children in the underserved communities provided by the West Lakes Early Learning Center. Together they **raised over \$500,000**.

Thank you to Jo Kirchner, Primrose CEO, and Annette C. Heng, Chief School Excellence Officer, for leading this Primrose Schools campaign.

Adding to the support were donors David and Judy Jang, as they hosted their second annual ELC Golf Tournament in October to raise funds for the West Lakes Early Learning Center. Over 100 golfers attended, and **raised \$45k**, to support the physical, mental, and spiritual needs of children at the ELC.

Along with the Jangs, we are grateful for the continued support of Bainum Family Foundation, PNC Bank Foundation, and Primrose Schools. Their investment is empowering children to thrive physically, mentally, and spiritually.



RAISED \$2.6M
to support 150 students and families annually at the ELC



Annette C. Heng, Raj Wadhawan, MD, Jo Kirchner, David Collis and Alfreda Clark

Opening Their Home and Hearts to Nurses

AdventHealth nurses were recognized during a nurse appreciation event hosted by Stacy and Jeff Jennings, Chair of the Heart, Lung and Vascular Institute's Foundation Board. Nurses are at the heart of AdventHealth's compassionate care and are vital to our healing mission.

“Having the opportunity to care for our patients and to make a difference in a time of need provides us fulfillment, but to be formally recognized last night was truly a special moment for all of us,” reflected Amber Arnold, a Registered Nurse at AdventHealth.



During an evening in the Jennings' home, nurses were encouraged to answer why they chose nursing as a profession. Many wrote their “why” statements on a Jenga set to serve as a fun reminder of the reason they pursued this calling.



Jeff and Stacy Jennings

“We were deeply touched by your responses to why you do what you do, and genuinely moved by your gracious thank-you’s. While you embody our healing mission, our Foundation’s philanthropic mission strives to serve you. Please know that we ‘see you’ – we celebrate your hard work and commitment to our patients every day.” — Jeff Jennings



AdventHealth team members with Jeff Jennings

Thank you for supporting our nurses, who are devoted to providing an extraordinary healing experience and making a difference in the lives of patients in Central Florida and beyond. You can say thank you to your caregiver or make a gift in their honor at AdventHealth.com/Thanks.

Giving Close to the Heart

Long-time supporters and members of the foundation family bring stability, motivation and inspiration to our strategic plans. Bob and Helen Cairns have been generously supporting AdventHealth for over 40 years. Bob's connection with AdventHealth began with his own personal journey as a patient.

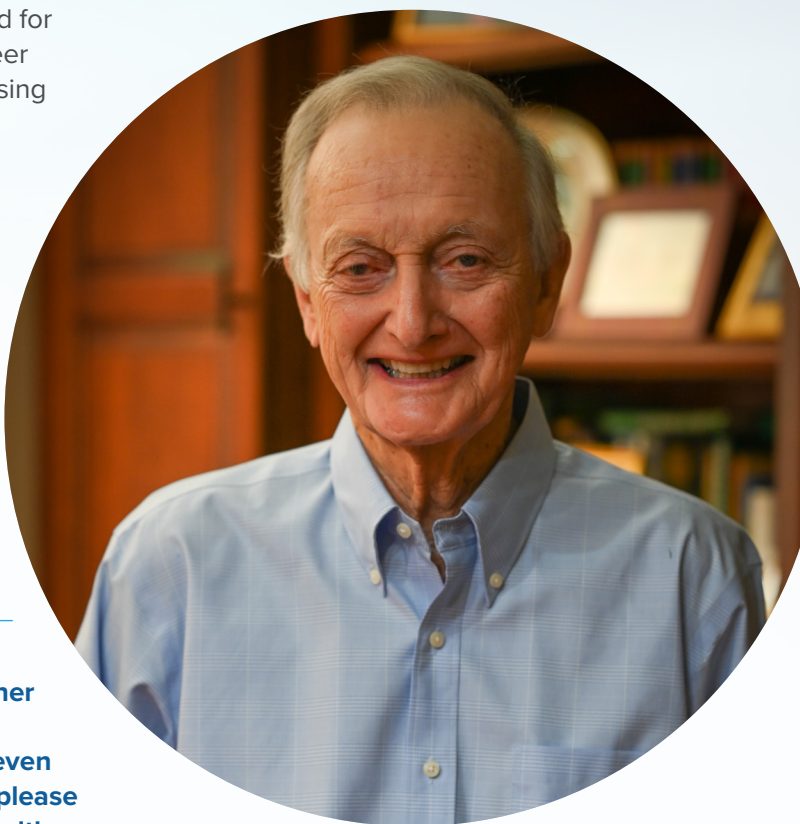
In 1977, Bob was diagnosed with Type 1 Diabetes. At the time, quality care for such a diagnosis was scarce and highly inaccessible. When Bob sought treatment at AdventHealth, formerly Florida Hospital, he was struck by the quality care he received from Dr. Samuel Crockett and his team.

Dr. Crockett introduced Bob to the Foundation, where Bob served on the Diabetes Institute Foundation Board for over ten years. Through his volunteer service, Bob participated in fundraising events, including annual Golf Tournaments where he regularly gave \$25,000 to support Diabetes Research and invited others to join him.

Despite no longer serving on the Foundation Board, Bob has remained connected with the Foundation, "I believe in it." Bob's most recent act of generosity to the mission of AdventHealth was expressed through a Planned Gift.

A "planned gift" refers to specific donation strategies that provide immediate benefits to you and future benefits to AdventHealth. Bob chose to give through a trust that will allow for a **\$1.8 million** impact on AdventHealth Translational Research Institute through Diabetes Research and Patient Education provided by AdventHealth Diabetes Institute.

When asked why he chose to give, Bob said simply, "This is close to my heart." Bob continues to be treated for Diabetes at AdventHealth. Dedicated donors like Bob and Helen Cairns have an incredible and lasting impact on patients in Central Florida and beyond.



Bob Cairns

A planned gift can be made either directly or through a gift model that provides tax benefits and even income. For more information, please email plannedgiving@adventhealth.com.

CORE EVENTS

Pink On Parade

Yamille led her team by example and got tested for cancer in hopes she could encourage others to get tested themselves. She was shocked when her tests resulted in a cancer diagnosis of her own. Yamille's journey was not without disheartening moments as she feared she might lose her life to her battle with breast cancer.

Despite feeling discouraged, Yamille's faith and supportive husband carried her as her body suffered and took a physical toll.



RAISED \$76,892
for Breast Cancer

As her physical appearance changed, she struggled to see the beauty she once felt. Yamille's husband responded by taking a photo of her and saying, "Without all the hair and the makeup on your face, you still look beautiful to me."

Yamille's story reminds us that we need community to help us through difficult times. Our annual Pink On Parade 5k is just one of the ways that AdventHealth gathers communities to rally behind cancer survivors and patients to support them in their journey.

Golf Classic

Over 210 community partners, 50 sponsors and AdventHealth leaders came together on April 27, 2022 to bring hope and healing to our community. Every swing, putt and step on the fairway helped to support local mothers, fathers, children, and friends through their health care journey.



RAISED \$112,000

Clay Shoot

Our 21st Annual Sporting Clay Shoot set new records as a sold-out event. 252 shooters helped raise \$80,000 for the future doctors, nurses, and clinical staff attending AdventHealth University (AHU) in addition to impacting various programs and services at AdventHealth.

Former AHU President Dr. Edwin Hernandez observed, “Thanks to the generosity of donors, the Grace Fund extends financial support in times of trouble. A few hundred dollars can allow a student to stay on track, graduate on time, enter the workforce, and begin extending the same healing grace and ministry of Christ to others.”



RAISED \$80,000
252 shooters

The support of generous sponsors and donors helps students on their journey to make the world a better place.

Day of Giving

The air was filled with incredible generosity during AdventHealth for Children's Day of Giving. This annual event supports children who are battling cancer and other serious, long-term illnesses right here in Central Florida. With your help, families in the hospital can focus on what's most important: helping their child get better.

We want to thank each donor who called in or donated online on December 14, 2022 to support this cause. Over the last five years, **iHeart Orlando has provided nearly \$1.5 million** in donated media and support for the live-radio broadcast.

A special thanks to our radio hosts Chad, Leslye, and Jana from Magic 107.7, our celebrity guests Meredith McDonough from WESH 2 News, Jack Bradshaw from Real Radio 104.1, No Lonely Hearts, and the incredible Mrs. Claus.



RAISED \$43,000
for children

We also want to recognize members of the Trans-Siberian Orchestra and BPD Advertising Agency for their generous donations, along with our superstar patients who came to share their stories of hope and healing on-air.

2022 Volunteers of the Month

January | Timothy W. Hendrix, MD

Dr. Hendrix showed a willingness to answer calls and texts as well as become involved in our core events, endorsed events and even meetings. His help was invaluable to the philanthropic efforts of AdventHealth during the pandemic.



February | Jeff Jennings

"It comes back to family. AdventHealth has always supported my family, and I want to support the work AdventHealth does for our community. I want to continue to advance the mission of AdventHealth through giving and community support."

March | Melanie Cianciotto

Melanie's passion for Hospice care is rooted in her belief that the work of Hospice is of great importance and is extremely meaningful to the families who are impacted.



April | Scott Silvestry, MD

"I'm tremendously grateful for AdventHealth Foundation because we can't do the things we need to do for our patients without this kind of partnership. The Foundation helps ensure patients in our community are not deprived of lifesaving care. They are able to get these resources because of the generosity of our community, of which I am a small part, and I have to do my share."

May | Robert Holloway, MD

Over the years, Dr. Holloway listened as his patients expressed their gratitude and introduced many of them to the Foundation staff. As a result, many significant projects have been funded to benefit cancer patients at AdventHealth.



June | John and Kim Erhard

"When I saw all the amazing things AdventHealth was providing patients, I felt connected instantly. From there forward, as parents, we definitely wanted to support the effort."

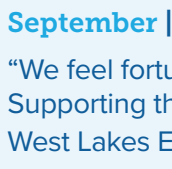
July | Connie Brink

“With a faith-based enterprise that has a mission of Extending the Healing Ministry of Christ, Employee Giving is a simple, yet compelling demonstration of how each of us can live that mission.”



August | Amber Orman, MD

“Serving others is my purpose on this earth, and doing that as a physician is a great honor.”



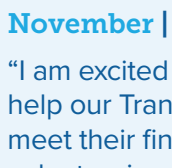
September | David and Judy Jang

“We feel fortunate that we can give to a project that is local. Supporting the whole family is what appeals to us. Supporting the West Lakes Early Learning Center impacts the whole community.”



October | Ana Armstrong

Over the years, Ana has been actively involved with the Pink On Parade 5K event held annually in and around the Celebration campus. From attending planning meetings, to promoting the event as well as participating, she commits large amounts of time and energy to raising awareness and funds for the Breast Cancer program.



November | Wilda Gamboa

“I am excited that I can do this meaningful endeavor and that it will help our Transplant Patients and their families. Helping patients meet their financial needs is my primary motivation. I also like volunteering to meet people and hear their stories. It is such a fulfilling experience and a way of making new friends. I just love it.”



December | Katie Loschiavo

“The children inspired me to get involved. I love seeing how it makes a difference first-hand whether it's monetary donations going toward purchasing something that directly helps the children or volunteering my time to help brighten a child's day.”

2022 LIFETIME DONOR HALL OF FAME

The Lifetime Donor List recognizes friends of AdventHealth whose generosity has made a significant impact on health care with cumulative lifetime giving of \$25,000 or more.

LEGACY PATRON \$5,000,000 or more

Bainum Family Foundation
William T. and Aura W. Bland
Dr. Phillips Charities
Ginsburg Family Foundation
Anthony and Sonja Nicholson
Walt Disney World Company
Winter Park Health Foundation

PHILANTHROPIST \$1,000,000 – \$4,999,999

The Rita and Jeffrey Adler Foundation
AGFA Healthcare
Homer N. Allen
AmeriTeam Services, LLC
The Martin Andersen - Gracia Andersen Foundation, Inc.
The Dale E. and Cheryl Barch Charitable Foundation, Inc.
Joyce M. Bates
Joseph and Karen Bierer
Dr. and Mrs. Hartmuth Bittner
In Memory of Alyce B. Shames
Brasfield & Gorrie, LLC
Edyth Bush Charitable Foundation
The Bush Family
Estate of Louisa B. Bussing
The Chatlos Foundation, Inc.
Stephen J. Clooback
Crothall Healthcare
Des and Mary Lou Cummings
Eleanor Davis
John Davis
William C. Demetree, Jr. Foundation, Inc.
Diamond Resorts International
Ingeborg Ellzey
Lothar and Jana Estein
FEP of Team Health
The FINFROCK Family of Companies
Eunice Fuller Family, LLP
Dr. and Mrs. Douglas E. Gearity
Elizabeth Morse Genius Foundation, Inc.
Chick and Lisa Gregg
Dr. and Mrs. Ben and Margaret Guedes
Trina Hidalgo
Holler-Classic Automotive Group/The Juliette Holler Family
In Memory of Charlene J. Pepper
iHeartMedia
William and Jean Iles
Beat and Jill Kahli/
Avalon Park Group Management

W. K. Kellogg Foundation
Kids Beating Cancer, Inc.
Richard Macsherry
Richard B. Meyers
Elinor & T.W. Miller, Jr. Foundation, Inc.
Media Networks International
Mildred Overstreet Trust
Dr. Jogi and Dr. Annapurna Pattisapu
Anthony and Deborah Rossi
Runway To Hope and
The NeJame Family
Dr. Irfan Siddiqui
Stryker Endoscopy
Sam Swope
Frank and Diane Torchia
SunTrust Bank of Central Florida, NA
USAP Florida
Richard and Lucille Verdu
Wayne Densch Charities, Inc.
Al and Brea Weiss
Peter and Linnae Williams

HUMANITARIAN \$500,000 – \$999,999

Darrell Armstrong Foundation for Premature Babies, Inc.
The Batchelor Foundation, Inc.
Remy and Lise Bordier
Robert and Helen Cairns
Beverly B. Cannon
In Honor of Mr. and Mrs. Clint Carrico
CarSue Distribution
Kenneth H. Cisney and Thelma F. Cisney Memorial Fund
Coastal Mechanical Services
David and Gena Collis
Derek and Nalani Cummings
The Richard and Helen DeVos Foundation
Florida Association of Free and Charitable Clinics
The Galloway Foundation
Clarence P. Geis Family Trust
Glaxo Wellcome, Inc.
GrayRobinson, PA
Heart of Florida United Way, Inc.
Lars and Julie Houmann
Jacqueline & Vincent Hughes Family Foundation
HuntonBrady Architects, PA
The Susan G. Komen Breast Cancer Foundation, Inc.
Annie Dempster Kyle Estate
Hymen and Harriett Lake
Susan B. Levy Trust
Walter J. and Augusta S. Levy

Irene Manning
Joseph Markoly
NuSI Nutrition Science Initiative
Orlando Magic Youth Foundation
Orosz Family Foundation
Rose Parapiglia
The Pepsi Bottling Group, Inc.
The Prince-Olson Family
Alexis and James H. Pugh, Jr.
Leo Reuter
Robins & Morton Group
Marla Santos Silliman
Dr. and Mrs. Paul Sherman
William Silliman
Sprint-Florida, Inc.
William A. Steele, MD;
The Steele and Widmer Families
Eva Striplin
Stryker Corporation
Mario and Alicia Szewczuk
Track Shack of Orlando
Valencia College
Mr. Suree and Dr. Zaby Vyas Foundation
Allen Wooldridge, Jr.
Karen L. Wrenn Trust
Ziegler Capital Markets

VISIONARY \$250,000 – \$499,999

22squared, Inc.
Accredited Surety & Casualty Co., Inc./The Jallad and Snow Families
AHMG Radiology at Central Florida
Align Business Advisory Services
Amistad International
Ardmore Institute of Health
AT&T Business Systems, Inc.
B.A.S.E. Camp Children's Cancer Foundation
Baldwin-Fairchild Cemeteries & Funeral Homes
BB&T
Michael Benedetto
BERG Health
Carl E. Berg
Dr. and Mrs. Willard H. Boardman
Kenneth and Ruth Bradley
Brasfield & Gorrie
Equipment & Supply
Katharine Brice
Bristol-Myers Squibb Company
Colin Burgess
Dalia Cantor
CDF Real Estate, LLC
Celebration Seventh-day Adventist Church
Central Florida Pathology Associates, PA
Cerner Corporation
Charity Challenge, Inc.
CHARTER COMMUNICATIONS
The Community Foundation, Inc.- Jacksonville
Comprehensive Energy Services, Inc.
Creation Development Foundation, Inc.
Cushman & Wakefield of Florida, Inc.
Earl Davenport
Joseph T. Davey, Jr. Trust
Athena Dever
Daniel and Jackie Devine
Dodds Family Foundation
Timothy Dwyer
Vivian C. Esch
First Union National Bank/Wachovia
Florida Blue Foundation
Fraternal Order of Eagles Aerie #3496
Fraternal Order of Eagles, Grand Aerie
Kristine and Kevin Gowen, Sr.
The Haleski Foundation
Harper Limbach, LLC
The William Randolph Hearst Foundations
Philip Hertz
Johnny and Diana Holloway
Eric and Diane Holm
Gerald and Stella Hubbell
Francis Issa
Andrew and Dena Jalbert
Just In Queso Foundation
Dr. Jules Klein
Little Diversified Architectural Consulting, Inc.
Lucy Little
Robert and Marjorie Lloyd
David and Eydie Macinnis
Robert and Julie Mandell
Market Traders Institute, Inc.
Lisa Mastrianni
The Meffe Family
Harold and Rosy Mills/Mills Family Foundation
Herman and Quilvie Mills
Moran Kidd Lyons Johnson & Berkson, PA
Thomas P. and Jeanne L. Moran Foundation
Todd and Shelly Morgan

Jack and June Nelson/Nelson
Investment Planning Services
Dr. and Mrs. Peter C. Nelson
Dr. and Mrs. Scott C. Nelson
North American Credit Services
North American Division of
Seventh-day Adventists
Orlando Magic, Ltd.
Osteopathic Foundation of East
Orlando
Parkinson Association
of Central Florida
PNC Foundation
Primrose Schools
National Support Center
Margaret PUNCHES
Paul and Gina Rice
RLF Architecture, Interiors
& Engineering
Roche Laboratories, Inc.
Henry Roth
SeaWorld Parks & Entertainment
Alfonso Serrato
Terry and Paula Shaw
Siemens AG
Siemens Energy, Inc.
Jan and Daisy Staniszkis
Dolores Stephens
Dr. and Mrs. Louis Stern
Joseph Sumara
Jeff and Alicia Sweeney
Sweet Baby Shade
Telan, Meltz, Wallace & Eide, PA
Triad Isotopes
Robert Vander Weide
H. J. "Butch" and Karen von Weller
and their Family
Melissa Vosburg, Inc.
Jeff and Susan Vosburg
Leonard and Marjorie Williams
Judy and Bob Yarmuth and Family
Znetix

CENTURION **\$100,000 – \$249,999**

4Ocean PBC
A.T.A.P. COMPANIES -
Dr. Jo Hewell, CEO
Rajia and Kristen Ackley
Dr. Rodney Ackley
Adams, Hall, Schieffelin & Smith
Rene Aerts
Steven and Lee Alexander
Robert and Christine Allen
Amerifactors Financial Group, Inc.
Amgen, Inc.
Kurt Anderson
Dr. Thomas and Dr. Diane Andrews
ANNIKA Foundation

George and Irene Anscombe
Artsy Auctions
DBA Scott Laurent Collection
Allen Systems Group
AstraZeneca
Austin Commercial
Leslie Bacardi
Barton Malow
Dick and Andrea Batchelor
Batson-Cook Company
Helen Ann Beam
Fowler Groves, LLC/
The Bekemeyer Family
David and Lynell Berelsman
Albert and Mary Bergeron
Richard and Mary Bischof
Mardian and Joan Blair
Boston Scientific Corporation
Hartle M. Bowness Dynasty Trust
Chuck Braun and Joan Thyer/
HHCP Architects
Brown Parker & DeMarinis Advertising
Buonauro Family Partnership
Robert and Mary Ann Bush
The Bywater Company/
Ted and Mary Wayne Bywater
Rosanna and Stephen Cahill
Foundation
Cain Brothers & Company, LLC
David Calcanis
Cardinal Health, Inc.
Cardiovascular Surgeons, PA
E. Rhodes & Leona B. Carpenter
Foundation
Maury and Elaine Carter
CenturyLink
Chapman and Cutler
Chevron U.S.A., Inc.
Childhood Neurosurgery &
Center for Hydrocephalus, PA
Jere and Marian Christens
Dr. Todd and Dr. Meredith Christie
Citrone Foundation, Inc.
Robert and Cindy Citrone
Clear Channel Communication
Coach Rob's Benefit Bash, Inc.
William and Janet Coleman
The Colonial BancGroup, Inc.
Combined Federal Campaign
Comfort Suites Orlando
Richard and Helen W. Cook Fund
James M. Cox Foundation
Cross Country Staffing, Inc.
Ted and Heidi Cruz
William L. Culbert, Jr. Trust
Davis & Associates
Dick and Anne Davis
Dr. and Mrs. Wilbur M. Davis, Jr.
Donna de Armas

Deloitte Services, LP
DeRoyal Industries, Inc.
Dr. and Mrs. Gregory D. Dietrich
William and Deborah Dillard
Christopher Dixon
Daryl and Kimberly Dixon
Samuel Dixon
Dr. and Mrs. Christopher E. Dobson, II
Dreyer's Grand Ice Cream
DS Services of America, Inc.
Naomi DuBose
The Ferdinand and Anna Duda
Foundation, Inc.
Ferdinand and June Duda
Duke Energy
Duke University
Andrew Piecuch and
Kristy Dunlap Piecuch
Chad and Ann Marie Eichelberger
Charles K. Eisen
Inga Ellzey Chis Foundation
Karl and Susan Ellzey
Empire Financial Group
Energy Air, Inc.
Estes, Ingram, Foels & Gibbs, PA
Jerry C. Evans
Dr. George D. Everett and
Ms. Anna Lillios
Dr. Jack P. and Ms. Elsie A. Facundus
Dr. Irving and Mrs. Pam Feldkamp
Fidelity Brokerage Services, LLC
Fifth Third Bank
Stephen and Judith Flanagan
Florida State Auxiliary, Inc. Fraternal
Order of Eagles
Scott T. Fote
Dr. Donald J. Fraser
Richard and Lucille Fronk
Robert Gamez Foundation
Diane H. Gay
General Conference of S.D.A.
Genomic Health, Inc.
Get Well Network
Leona Getty Trust
Ginn Clubs & Resorts, LLC
Ginn Development Company, LLC
Charles J. Goodgame
Jean Gould
GR8 to DON8, INC.
Great Western Bank/
Washington Mutual
William J. Green, Jr. Trust
Gresham, Smith and Partners
Filippo and Santina Guani
Harper Family
Charitable Foundation, Inc.
James C. Hartman
HealthCare Parking Systems
of America, Inc.

Dr. Frank and Mrs. Flossie Hellinger
Lauri Herman
Heroes For Babies
Jan Herold
Robert Lee Hill
Harold E. Hirsch Foundation, Inc.
HKS Architects, Inc.
Holland & Knight, LLP
Jack Holloway Foundation, Inc.
Holy Trinity Greek Orthodox Church
of Greater Orlando
Dr. Lynne A. Hopkins
Hughes Supply, Inc.
Franklin and Cheryl Hutsell
HWLF, LLC
Insurance Office of America/
John and Valli Ritenour
Maria J. Jackson Trust
Dr. Jack and Mrs. Marliss Jacobson
Johnny Jallad
David and Judy Jang
Jack Jennings & Sons, Inc.
Jeff and Stacy Jennings
Sharon Jernigan
Jewett Orthopaedic Clinic, PA
Mary Lou Johnson
Dr. and Mrs. Rodney C. Kang
Michael and Christine Kirchner
The Kresge Foundation
Chuck and Dianne Kulp
Pauline Lafontaine
Lake Erie College of Osteopathic
Medicine (LECOM)
Langford Family Foundation
Dr. Ann-Christine Langselius
Samuel and Marion Lawrence
Lucienne Lee
Ed and Maria Leerdam
Arthur Leonhardt, Jr.
Lexus of Orlando/Jimmy Bryan Family
Isaac and Dorothy Lidsky
LIFT Orlando
Lockheed Martin Missiles and
Fire Control
Dr. and Mrs. Thomas D. Looke, Jr.
Dr. Jorge J. Lopez
John and Rita Lowndes
James and Martha MacPhee
Chesley G. Magruder Foundation
Philip and Lucy Manley
Maurizio and Marianella Maso
Dr. and Mrs. James Matiko
Mattern Wholesale
DACC, INC. and Jamie and
Heather McCandless
Benjamin McKendall, Jr.
Meadows & Ohly, LLC
Mechanical Services
of Central Florida, Inc.

2022 LIFETIME DONOR HALL OF FAME (cont.)

Lane Merrifield
 Millenia Fine Art Gallery
 Larry and Mary Miller
 Mimedx Group, Inc.
 Miracle Makers Fund
 Raymond and Pearl Mittan
 Craig and Katherine Montgomery
 Mark and Cheryl Montgomery
 Dr. David and Mrs. Sheryl Moorhead
 The Morningstar Project
 Morooso, Reynolds, Castillo,
 Robinson & Lukman, MD, PA
 Joseph and Kristin Morse
 Mark and Wendy Nation
 National Parkinson Foundation, Inc.
 New England Financial Services
 Nhu and Lena Nguyen
 Sal “Joe” and Jodi Nunziata
 ODC Construction
 Michael & Colleen O'Donnell
 Charitable Gift Fund
 Kevin and Mary O'Donnell
 Edward Olszewski
 One Blood
 Orlando Neurosurgery
 Orlando Sentinel Family Fund
 Borron and Beppy Owen
 Terry and Susan Owen
 Robert and Laura Owens -
 Owens Realty Services
 Oxford Advisory Group
 PCL Construction Services, Inc.
 Compass Knowledge Group
 Amada Perez Living Trust
 Estate of Helen May Pessirilo
 Pfizer, Inc.
 PNC Bank
 Jo Ann Powell
 Practice Support Resources
 Lee Pressler
 Publix Super Markets Charities, Inc.
 Frank J. Pyle, Attorney
 Raining Roses Productions, Inc.
 Dennis and Donna Ramsey
 Dr. Monica and Mr. Stanton Reed
 Robert Reiser
 Remediation Specialists, Inc.
 Sara Louise Ricker
 John and Laura Riley
 Monica and Johnny Rivers, Jr.
 Roberts Family Fund
 The Robinson Foundation
 Roche Diagnostics Corporation
 Dr. Richmond E. Roeske
 Ronald McDonald House Charities
 of Central Florida
 Ronald McDonald House Charities

The Rotary Club of The Villages
 #31697
 Rotary Club of West Orlando
 Rotary Foundation
 Allen and Sandra Rowland
 John and Audrey Ruggieri
 Allen and Sandra Saft
 Dr. Sy and Mrs. Carolyn Saliba
 Sanofi
 Frank Santos
 Dr. Gerald and Mrs. Shirley Schoepflin
 Wyatt and Janell Scott
 William E. Simon Foundation, Inc.
 The Gertrude Skelly Foundation
 The Smile Train, Inc.
 Mary Smith Estate Winter Park
 Memorial Fund
 Dr. Steven R. Smith
 SNR Denton US, LLP
 Eddie and Milca Soler
 Lori Sommer
 Sonny's Franchise Company
 Sony Electronics, Inc.
 Cliff and Carla Stein
 Dr. and Mrs. Frank H. Stieg, III
 Karl Storz Endoscopy
 Marie Stuart
 Robert E. Swanson and
 Verbelee Nielsen-Swanson
 Barbara Swope
 Robert and Elyette Taylor
 TD Charitable Foundation
 Bryan and Marjorie Thomas
 TLC Engineering for Architecture
 Larry and Laurie Tobin
 Daryl Tol
 Stacey Tol
 Trane
 Tri-City Electrical Contractors
 Mary Truett
 Tupperware Brands Corp.
 Turner Construction Company
 U.S. Bank National Association
 Universal Orlando Foundation
 Upshot Capital Advisors
 Ustler Group of Companies
 Ed and Teresa Varnes
 Versacare
 Wells Fargo Bank
 Thomas and Sharon Werner
 Westbrook Air Conditioning &
 Plumbing
 Westgate Resorts Foundation, Inc.
 Williams Family Foundation
 Patrick Williamson
 Winburn Associates, Inc.
 Bi-Lo/Winn Dixie Foundation, Inc.

Winter Park Memorial
 Hospital Auxiliary
 Dr. Thomas F. Winters and
 Dr. Rebecca L. Morooso
 Gail Wiser
 Earl K. and Mary Wood
 Workforce Central Florida
 Thomas and Penny Yochum
 Dr. Jennie Yoon and
 Mr. Larry Buchanan
 Dr. and Mrs. J. Michael Yurso
 Dr. Ronald and Dr. Charlotte Zane
 ZHC Corporation, Inc.
 Zumpano Patricios & Winker, PA
 Dr. and Mrs. Hans Zwart

LEADER
\$50,000 – \$99,999

3D Exhibits
 4R Restaurant Group, LLC
 A & A Painting, Inc.
 ABB, USPMV and
 ABB Foundation, Inc.
 Achand Foundation
 All About Events
 All Saints Church
 Dr. and Mrs. Luis G. Allen
 Anonymous
 AMB Foundation
 American Audio Visual
 American Cancer Society
 American Heart Association
 AmeriCares Foundation, Inc.
 Dr. and Mrs. John C. Anderson
 City of Apopka
 Dr. Juan P. Arnoletti and
 Dr. Analia Castiglioni
 AT&T Foundation
 AT&T Wireless Services/
 City Cellular of Central Florida
 Athena Health
 Axiom Healthcare Pharmacy, Inc.
 David and Janice Banks
 Virginia & Donald Barker Family Fund
 Chris Barley Therapy Dogs
 Theodore and Molly Bartholow
 Dominic Bartol, III
 Andrew and Jayne Bassler
 Be Brave Foundation
 Steve and Jen Belflower
 Ryan and Krysten Bell
 Derryl and Jacqueline Benton
 Dr. Stephen and
 Dr. Bobetta Berthelsen
 Beytin, McLaughlin, McLaughlin,
 O'Hara, Kinman & Bocchino, P.A.
 Compass Research, LLC
 Birdies for Breast Cancer, Inc.
 G. Thomas and Nancy Bland

Blue Logistics
 BMO Capital Markets
 Donald and Carolyn Bohannon
 Boone, Boone, Boone, Koda &
 Frook, PA
 Chris and Melita Bordner
 Bovie Medical Corporation
 Diana J. Boyce
 Donald and Helen Bradley
 Greg and Aletha Braithwaite
 Ross Breunig
 Broad and Cassel, PA
 John and Renee Brownlow
 The Brumback Family
 Jimm and Susie Bunch
 Julie Burkey & Family
 Tim and Charis Burrill
 Elsa Butler
 Jonathan Cantor
 Capio Partners, LLC
 Dr. Thomas and Dr. Bonnie Carson
 Marion Cashman
 Sean and Amy Casterline
 Central FL Assoc. of Physicians from
 the Indian Subcontinent
 Central Florida Cardiology Group, PA
 Central Florida Women's League
 Mina Chambers
 Odessa Chambliss Quality of
 Life Fund
 John and Suzan Chick
 Child's Play Foundation
 Dr. and Mrs. John B. Chrispens
 Christner Industries, Inc.
 Christner's Prime Steak & Lobster
 Cisco Systems, Inc.
 Virginia Cissel
 David and Leesa Civiero
 ClearBalance,
 by CSI Financial Services
 CliftonLarsonAllen, LLP
 Karla Coble
 Coca Cola Bottling Company
 of Orlando
 Antonio and Tona Coley
 Commercial Design Services, Inc.
 Compressed Gas Solutions, Inc.
 Computer Associates
 International, Inc.
 Tim and Vivian Cook
 Scott Coopersmith Stroke Awareness
 Foundation
 Jennifer L. Cornette
 Cottom Foundation, Inc.
 Covelli Enterprises, Inc.
 Cox Media Group
 David Cox and Cynthia Woodley
 Creo Medical Limited

Terry and Peggy Crum	S.I. Goldman Company	Dr. and Mrs. Jeffrey C. Kuhlman	Nperspective - CFO Services
Susan Cruze	Goodings Catering	Nick and Samira Kurji	Richard and Mary Nunis
Robert and Patricia Curren	Todd and Melinda Goodman	Kushner Companies Charitable Foundation	Nurse Care 2000, Inc.
Dr. Barbara Czerska	Norma Jean Goodson	Charles and Seryl Kushner	OEC Business Interiors
D12 Foundation	Clifford & LaVonne Graese Foundation	Langan Engineering and Environmental Services	Marjorie Ohlau
Dr. R. Duane Davis and Dr. Suzette Casal	Ben Hill Griffin, Inc.	Carl F. Langlas Estate Winter Park Memorial Fund	Olympus America, Inc.
Richard Debler and Claudia De Garay	Johnnie and Chanin Griffin	Levitt Homes, LLC	Omega Medical Imaging, LLC
Pete and Cynthia DeBusk	Dr. and Mrs. George E. Guthrie	Eli Lilly and Company	Orlando Health
Deco Recovery Management	Randall and Cynthia Haffner	Robert and Teresa Lindquist	Orlando Volleyball Academy
Dell Technologies	Richard and Jessica Haines	Dr. and Mrs. Jonathan J. Linthicum	The Outsource Group
Deloitte Consulting	Paul and Mary Jane Halyard	Karen and Richard Lippert, Jr.	Overstreet Foundation
Delta Delta Delta Alumni Association	Robert Hamilton	Lowndes, Drosdick, Doster, Kantor, & Reed, PA	Owens & Minor, Inc.
Ryan and Michelle DeVos	Susan Hamilton	Michael and Nancy MacColeman	Palmano Group Real Estate Brokerage, LLC
Dr. and Mrs. Terry J. Dietrich	Dr. and Mrs. Ted Hamilton	Anthony and Robin Malatino	Rich Palmano
Dillard's, Inc.	Dr. and Mrs. John D. Hannah	Walter and Jean Manley	J. Brian and Tina Paradis
Richard and Barbara DiMarco	Healthy Start Coalition of Seminole	Michael and Crisa Marder	Parke-Davis
Eduardo and Holly Dominguez	Heintzelman Employee Club	Mariners Care	Parsons
DPR Construction, Inc.	Harvey and Dayna Heller	Marketing Partners	Pearson Doyle Mohre & Pastis, LLP
Estate of Priscilla Cindy Duke	Ann Hempen	The Joseph G. Markoly Foundation	Peninsula Engineering, Inc.
Dyer, Riddle, Mills and Precourt, Inc.	Dr. and Mrs. Edwin I. Hernandez	Gary and Anju Marlar	Petals of Hope Foundation
Gregory and Tricia Edris	Rosemary Hewitt	Mark and Kelli Martin	The PFM Group
John and Kimberly Ehrhard	Hoechst-Roussel Pharmaceuticals, Inc.	Massey Services, Inc.	PGA Tour, Inc.
Electronics Boutique	Holloway Family Foundation	The Harvey and Carol Massey Family Carolyn Mayo	Phi Beta Psi Sorority
Estate of Rita T. Ellis	Dr. Robert W. Holloway	John and Dwan McAndrews	Thomas Pisello
Paul and Pam Emerson	Hope For More Foundation, Inc.	Joe B. McCawley	Poole Construction Company, Inc.
Enterprise Electric, LLC	The Huntington National Bank	Dr. Nathalie D. McKenzie	Dr. and Mrs. Barry F. Portnoy
Epic Systems Corporation	Dan and Mary Hurley	McNeill Family Foundation	Dr. and Mrs. Richard E. Pratley
Ernst & Young	IBM Corporation	The Medical Escrow Society	Prestige Concrete Products
Ethicon Endo-Surgery, a J & J Company	IBM Global Healthcare	Medtronic, Inc.	Property Condition Assessment, Inc.
Fairwinds Credit Union	I-CON Systems, Inc.	Diane Meiller and Associates, Inc.	Dr. and Mrs. Robert L. Randell, Jr.
Arthur Fedrigon and Sonia Glating-Fedrigon	International Sales & Marketing Global Recovery Alliance AG	The Menard Family	Sandra L. Randolph
The Fields Families	Intuitive Surgical, Inc.	Meritage Homes of Central Florida	RE/MAX Properties of Florida, Inc.
Fine Arts Limited	Ivanhoe Broadcast News, Inc.	Metropolitan West Asset Management, LLC	Richard and Lynnet Reiner
First Horizon Foundation	Dr. Ravi and Dr. Uditah Jahagirdar	Dr. and Mrs. Robert J. Metzger	Elmer R. Rewa
First Horizon/TD Bank	John and Louise Jennings	David Paul Meyers Estate	R-G Crown Bank
Harold and Priscilla Fisher	JHT, Inc.	Dr. and Mrs. Robert K. Michaels, III	The Richardson Foundation
Alan and Carol Flaumenhaft	Johnson & Blanton Government Relations Consulting	Mid-Florida Hospital Specialists, PA	James and Teresa Roberts
Florida A & M University	James Johnson	Bob Miles and Robin Bressler	Kathleen Roberts-Rossin
Florida Blue	Jeffrey and Penny Johnson	Dr. and Mrs. Richard L. Milholm	Peggy Robison
Florida Heart Institute, Inc.	Lee A. Johnson	Beth Miller	Rock Pink, Inc.
The Florida Mall - Orlando	Eric and Isabelle Jolly	Juliet S. Milligan	Jack and Peggy Rogers
Florida Oncology Network, PA	Robert E. Jones Foundation	Frederick and Jennifer Mohre	Rotary Club of Bonita Beach Sunset #88066
Fraternal Order of Eagles Aerie #10012	Dr. and Mrs. J. Daniel Jones, III	Mark and Lisa Moore	Rotary Club of the Villages Foundation, Inc.
Gary Frazier	Dr. and Mrs. Lennard Jorgensen	Mark Morrow	Rotary Club of Winter Park Florida, Inc.
Dr. and Mrs. Terry J. Frederick, Jr.	JP Morgan Chase Bank	Dorothy Sinz Muckleroy Charitable Foundation	Rothman Orthopaedics
Fujifilm SonoSite	Peter Kassabov	Danny and Lisa Myers	The Rouse Law Office
Yvonne Fulbright Garcia	Dr. Moby Kazmi	National Staffing Solutions	Roy Family Fund of The Greater Cincinnati Foundation
Dr. Bhargav Gajjar of Vishwa Robotics & MIT	Kenneth and Janet Keene	Navigant Consulting	RS&H
James J. and Joan A. Gardner Family Foundation	Margaret Keller	Dr. and Mrs. Roger B. Nofsinger	Rsource Healthcare
Genentech, Inc.	Dr. James E. Kendrick	North Highland	Rumberger, Kirk, Caldwell, PA
General Electric	Janis Kern	The Northern Trust Company	Brooke and Patricia Sadler
Maryann Giordano	Susan Kintner		William and Joan Salmons
	Margaret Kohn		Anthony M. Santelli and Diana Davis-Santelli
	Ken and Linda Koldenhoven		

2022 LIFETIME DONOR HALL OF FAME (cont.)

Saturn of Orlando
 Eric and Katy Schreck
 Jill S. Schwartz & Associates
 Dr. and Mrs. Regan A. Schwartz
 Seaside National Bank & Trust
 Seavest, Inc.
 Dan and Lynn Sedwick
 Seminole County Board
 of County Commissioners
 Seminole County Sheriff's Office
 Siemens Building Technologies, Inc.
 Siemens Medical Solutions USA, Inc.
 Dr. Scott and Mrs. Alison L. Silvestry
 Dr. George R. Simon
 Skanska USA Building, Inc.
 Skinnerstrong Foundation, Inc.
 Smart City Telecom
 Smart Trader, LLC
 Edward Smith
 Pamela Smith
 Sharon Smyth
 Southern Stone Communications
 Michael Speck & Associates, Inc.
 Matthew and Scottie Stanchina
 Starlight Children's Foundation
 Chuck and Margery Pabst Steinmetz
 Stericycle
 STERIS Corporation
 Stockcross Financial Services, Inc.
 Glenda Joy Stone
 Stryker Instruments
 Subin, Shams, Rosenbluth &
 Moran, PA
 Sun Life Financial
 Sundance Group, LLC
 Dr. and Mrs. Michael Suszter
 Dr. Andrew Svetly
 Earl Swensson Associates, Inc.
 Sysco Food Services
 of Central Florida
 Dona Tannler
 Tapestry Asset Management, LP
 Tavistock Foundation
 Gertraud E. Taylor
 TECO Energy, Inc.
 Therigy
 Thomas Lumber Co.
 Alan Thomas
 Trickle, Leigh & Mann
 TrustCo Bank
 University of Central Florida
 Foundation, Inc.
 Uno Restaurants, LLC
 Walgreens
 Eric and Jennifer Wandersleben
 Michael and Tracie Ward
 Dr. Joseph and Mrs. Susan Warren
 Barbara Weiss

Dr. Jon S. and Mrs. Peggy F. Wilkins
 Lisa and Rick Willhour, Jr.
 Robert and Trudy Wilson
 Winter Park Urology Associates, PA
 Wiring Technologies, Inc.
 Frank E. Witt Foundation
 Frank and Juanita Witt
 Women's & Girls' Cancer Alliance
 Clay and Brittane Worden
 Yakult
 Zotec Partners

INVESTOR \$25,000 – \$49,999

Abbott Laboratories
 Absolute Thinking, Inc.
 Ackley Realty, Inc.
 Active Network
 ADRA Adventist Development &
 Relief Agency International
 Dr. Tanya O. L. Agard
 Dr. Aneesa B. Ahmad
 Anwar Ahmed
 AIT Life Safety
 David and Judy Albertson
 John Allen
 City of Altamonte Springs
 John and Carolyn Alvarez
 American Ambulance
 of Central Florida
 American Bronze Foundry
 American College
 of Lifestyle Medicine
 AmeriSource Bergen Drug
 Corporation
 Dr. and Mrs. Bruce V. Anderson
 Angling Against Cancer
 Annunciation Catholic Church
 Anthony International
 Bruce and Marilee Arrow
 Associates in Dermatology
 Athletes vs Cancer
 AVCON, Inc.
 Baby Face Portraits, LLC
 Robert Levy Baer Trust
 Bagley Promotional Products
 Baker & Hostetler, LLP
 Baker Barrios Architects, Inc.
 Dr. Christopher and Dr. Kristy Baker
 Bard Access Systems
 Jennifer Barker
 L. Graham and Elizabeth Barr
 Jody and NiCole Barry
 Michael F. Barry and Patricia Bartlett
 Baterbys, LLC
 Lucille Bayer
 BellSouth Corporation
 The Matching Gift Center
 Dr. Paulos Berhanu

Joseph and Geneva Bernik
 Dr. Matthew C. Biagioli
 Charles A. and Pearl E. Bigelow Trust
 Michael and Gail Bittman
 Bobo, Ciotoli, Bocchino, Newman,
 Corsini, White & Buigas, PA
 Eric and Heather Boughman
 Bovis Lend Lease
 Dr. and Mrs. Bradford J. Bowls
 Bowyer-Singleton & Associates
 The Boyd Foundation, Inc.
 Dr. and Mrs. J. Barry Boyd
 William and Laura Boyles
 William and Donna Bradford
 Marilyn Brady
 Kris Bratberg
 William Bray
 Broad Street Partners, LLC
 Joyce Brockner
 Jeffrey and Nicki Bromme
 The Brookestrong Foundation
 Murray and Betsy Brooks
 Juel K. Brown
 Patrick and Kristin Buchanan
 Beverly Bunton
 Bywater Management Company
 CALIC Group
 Jeffrey and Jenny Calvin
 Cambridge Homes
 Canaide, Inc.
 Capital Growth MedVest
 David and Stephanie Carmany
 Dr. Rosella and Mr. Israel Castro
 CDW Healthcare
 The Celebration Company
 Celebration Foundation
 Celebration Golf Club
 Celgene Corporation
 Center for Plastic &
 Reconstructive Surgery
 Central Florida Hospitalist Partners
 Central Florida McDonald's Assoc.
 Central Florida Neurosurgical Assoc.
 Centurion Business Finance
 Donald and Fonda Cerenzio
 Bradley and Lynde Chase
 Cheeriodicals
 Dr. Wayne Cheng
 Cheryl Cheske
 Chick-fil-A at Celebration FSU #01537
 Chick-fil-A at Winter Garden FSU
 Jill Chrispens
 Jeffrey Christoff
 Michael and Allison Clark
 CNA Foundation
 Chuck and Julie Cole
 Collier Jaguar
 Commons Medical Development, Inc.

Jeffrey and Debra Condello
 ConMed Corporation
 The Contigo Foundation
 Cook Incorporated
 Cooper Surgical, Inc.
 Khandi Cooper
 Chip and Shari Costantini
 Council of Fashion Designers
 of America Foundation
 Courtesy Pontiac - GMC
 Dr. Alexandros Coutsoumpas and
 Ms. Valeria S. Ramos
 Bill and Jane Crofton
 Dr. and Mrs. Bruce R. Crossman, Jr.
 The CSI Companies
 Eugene and Deborah Curcio
 Custom Cable Industries
 Custom Cooler, Inc.
 Patricia R. D'Alessandro
 Richard Dandrow
 Mark and Kelly Daniel
 Dr. Marcelo C. DaSilva
 Dr. and Mrs. Frank A. Dasse
 Christopher and Laura Dawkins
 Robert and Kimberli Dawson
 Ignacio De La Rocha
 Dr. David and Dr. Veronica Decker
 Bruce Deifik
 Robert and Lisa Deininger
 DeltaCare, Inc.
 DeLuca Enterprises, Inc.
 Dr. Paul Deponte
 Peter and Rebecca DeRosa
 Daniel and Pamela DeVos Foundation
 DG Foundation
 James Dicks and Deborah Brunton
 Digital Risk, LLC
 Chris and Amy DiMarco
 Dr. Brittany C. Dobson
 The Doebler Family
 Janet Donahue
 Dorothy's Family
 Howard Dorough
 Draeger, Inc.
 DRB Financial Group, Inc.
 Paul and Cheryl Dreyer
 Duke Realty Corp.
 Dunkin' Donuts & Baskin Robbins
 Richard and Lavelle Dycus
 Jason Edwards
 Dr. Tom H. Eickmann and
 Ms. Cherie C. Appleton
 Ellerbe Becket Architects & Engineers
 Donald and Annette Emery
 Encompass Services Corp.
 Carlos and Heather Escobar
 Ethicon, Inc.
 exp Global, Inc.

Faithsearch Partners, Inc.	Henry Jewitt Greene Estate	Emil Jahna, III	LPL Financial
Farah Construction Co.	Winter Park Memorial Fund	Mahavir and Pooja Jain	LTS Imaging Products, Inc.
Drusilla Farwell Foundation	Mary Greene	Nigel and Cosette Jamieson	Brian Lyster
LeeAnne Feagan	David and Priscilla Greenlaw	Jane's Room	Dr. Muchou J. Ma and
Susan Lynn Felder IRREV Trust	Greymart Recovery Services, Inc.	Janssen Supply Group, LLC	Mr. Yuanyann J. Chen
Femmes De Coeur, Inc.	Linda Grimmett	Kyle & Deborah Jensen Corporation	Winifred A. MacPherson
Dr. Anthony T. Fenison	Mason and Alice Grower	Johnson & Johnson HealthCare	Make Life Better Foundation/Unicity
Dorothy M. Fiedler	Dr. and Mrs. Shady Guirguis	Systems, Inc.	Dr. and Mrs. Alberto V. Mansilla
First United Methodist Church	Gulf States Credit Union	Johnson Controls, Inc.	Ronald and Karen Marcarelli
of Winter Park	Donald Hachenberger	Joe and Garla Johnson	March of Dimes -
Flash-Rite, Inc.	Ralph and Carol Hadley	Richard and Sandra Johnson	Birth Defects Foundation
Florida Citrus Sports Foundation	Dr. Zachary and Dr. Tiffany Hadley	Jones Lang LaSalle	U.S. Marine
Florida Desk, Inc.	John and Janice Hagensicker	Donald and Martha Jones	Jim and Elizabeth Mark
Florida Eye Clinic	John and Bunny Hamer	Mikki Jones	Markham Woods Realty, LTD
Florida Food Industry, Inc.	Laurence and Jane Hames	Abram & Ray Kaplan Foundation	Talmadge Marlar
Educational Trust	Kent and Mary Catherine Hamill	Tom and Gail Kapusta	Hoke Maroon Foundation
Florida Pediatric Associates	Irv and Connie Hamilton	Louis and Maria Katz	William and Pamela Maroon
Florida Tourism Industry Marketing	Estate of Brenda V. Harrison	Kavaliro Staffing Services	Robert and Jean Martin
Corp. dba Visit Florida	HDE, Inc.	John Kingman Keating and	Kathleen Masterson
State of Florida	HDR, Inc.	Lisa Fox Keating	Matern Professional Engineering
Margaret Ford	Jacqueline Head	Michael and Nancy Keating	Matthews Orthopaedic Clinic, PA
Gary L. Formet	Hedco Foundation	Jeffrey and Sheila Keiner	Dr. James R. Mault
Memorial Trust Fund, Inc.	Hematology & Oncology	The Kent Foundation	David Maus Foundation
Barbara Starnes Foster	Associates, PA	Walter and Vanessa Ketcham	Dr. Ronald Maxson
Foundation of the National Student	William and Elizabeth Hercules	Jason and Angeline Khoury	Lawrence and Anita Maxwell
Nurses' Association	Arlene K. Herrin	Kids' Docs	Dr. Steven and Dr. Tamberly McCarus
David and Marsha Fowler	Hewlett-Packard Company	Dr. and Mrs. Gerald W. King	McCree General Contractors &
Fralick Brothers, Inc.	Carey Hand Cox Parker Funeral Home	Dr. Jeffrey G. and Dr. Lisa M. King	Architects
James and Rose Frash	Dr. and Mrs. D. Ashley Hill	Kirby Rental Service	Richard McFadyen
Fraternal Order of the Eagles Aerie	Douglas and Heather Hilliard	Troy Kishbaugh	Paul J. McGarigal
#3550	Dr. and Mrs. John C. Hitt	Marilyn Klinger	Mark and Jennifer McGreevy
Dr. and Mrs. Vidor E. Friedman	Dr. Joyce and Mr. Tim Hoatson	Gregory and Kristen Knight	Marilyn McKean
Gallimore Southwest Fil Estate, LTD	Dr. Charles and Mrs. Lay Hodge	Christopher Korge	McKesson Foundation, Inc.
Dr. Jimmy G. Garas	Edmund and Krishna Hodge	Dr. and Mrs. David A. Kos	Joel and Genean McKinnon
William and Fran Garrity	Steve Ira & Chais-ing the	KPMG, LLP	Andrew and Elizabeth McPherson
Gatorland	Cure Golf Event	Lowell Kraff	W. Floyd and Marge McRae
W.W. Gay Mechanical Contracting	Dr. and Mrs. David L. Holder	Lake Brantley High School	D. Richard Mead Charitable
GE Lighting	Leslie Holloway	Lake Mary Preparatory School	Foundation
GE Medical Systems	The David P. Honey Charitable Fund	Lake Wales Medical Center	Stanley Mead
GenomeDx Biosciences Corp.	Fred and Debra Hoover	Auxiliary, Inc.	Medical Device Services
Deborah Gentry	Dr. and Mrs. Robert T. Hoover, II	Lanier Worldwide, Inc.	Medical Refiners, Inc.
Gertescca Touring, Inc.	Hope For The Future Foundation	LaSalle Bank, NA	Medico Environmental Services, Inc.
Josef and Fiona Ghosn	Dwight Howard	Kevin and Michelle Lay	Joseph and Gloria Melbourne
Dawn Giebler Millner	Michelle Hubbard	Jonathan and Krista Ledden	Memorial Health Systems, Inc.
Gilbane Building Company -	Gerald and Christine Hubbard	The Lee Foundation	Merck & Company, Inc.
Florida Region	Jeffery and Kimberly Hurst	Legoland Florida	Emily R. Merrill Estate
Ed and Connie Gilbert	IKON Office Solutions, Technology	Ed and Janet Lemasters	Lisa Metcalf
Suzanne Gilbert	Services, Inc.	Lifelink Legacy Fund	Metro Corral Partners, Inc.
Give Hope Foundation, Inc.	Immunex Corporation	Lillibridge Healthcare	Mitchell and Dena Mikkonen
GlaxoSmithKline	Infectious Disease Consultants, MD, PA	Marlene Linders	Scott and Rebecca Miller
Global West	Inkling Systems	Richard Lippert, Sr.	Thomas Miller
Go4theGoal Foundation	Insight, Inc.	LiveStrong Foundation	Mills Family Foundation
Gold N' Vision	Integrated Property Management	LiveVox	John and Judy Mills
Dr. and Mrs. David Goldman	Robert Irvine and Gail Kim	Dr. William A. Loe	Terry and Peggy Moreland
Dr. Timothy D. and Dr. Lori A. Grant	William and Alice F. Jacobs	Logogram, Inc.	Guillermo Moreno and Lindy Benton
Green Leaf Universal Edutainment, Inc.	Monty and Geraldine Jacobs	Juan and Yolanda Londono	Morgan Stanley
Jean L. Green Living Trust	Toshiko O. Jacobs	Love Your Melon	J.P. Morgan
Greenberg Traurig Law Offices	Jahna Foundation, Inc.	Greg and Evelyn Lowe	Daniel B. Moroff

2022 LIFETIME DONOR HALL OF FAME (cont.)

Duane Morris, LLP
Theodore and Dorothy Morrison
MPBP (Mothers of Prof'l Basketball Players, Inc.)
Kevin D. Murphy/Moore Stephens Lovelace, PA
Dr. and Mrs. S. Blair Murphy
Estate of Betty Jean Myers
National Medical Resale
Nebus Family Limited Partnership
Nephrology Associates of Central Florida, MD, PA
Terry and Magaly Newmyer
Drs. Bobby and Ami Nibhanupudy
Ed and Shawn Noseworthy
Nova Southeastern University
Novartis Pharmaceuticals Corp.
Novo Nordisk Pharmaceuticals, Inc.
NTS-Florida Residential Properties
Nucci Medical Clinic, LLC
Steven and Malinda Olson
Lucille O'Neal
Orange Lake Resorts Country Club
Orlando Heart Center
Orlando Internal Medicine
Orlando Sentinel Communications
The Orlando Sentinel
Orlando Utilities Commission
Orlando World Center Marriott
Dr. and Mrs. Ayodeji B. Otegbeye
Outfront Media
John and Nancy Outlaw
Dr. and Mrs. Ernest Page, II
David and Anne Palmer
David Pantoni
Marc Pantoni
David and Cynthia Parker
George Parker
Tina Patire
Dr. Sanjay J. and Mrs. Kavita Pattani
Dr. Daniel J. Patton
Dr. and Mrs. Donald E. Pearson
Angelina Perdomo
Vena A. Perez
Perfusion Associates of Central Florida
Perkins + Will
Charles Perry Partners, Inc.
Jack and Freida Peters
PGE Foundation
Phigenics
Robert Piezon
Playing For A Cause
Dr. and Mrs. Jay N. Plotkin
The Porch, Inc.
Eddie Portis
Dr. and Mrs. Joseph D. Portoghesi
Power Design, Inc.

Press Ganey Associates, Inc.
Price Waterhouse Cooper (PWC)
Privada Wealth Management
Puff n' Stuff Catering
Anthony and Lisa Pupo
Karen Purnell
Dr. and Mrs. Robert S. Quigley
Race Time Foundation
In Loving Memory of Maribeth Raiskin
Dr. and Mrs. Agustin Ramos
Benjamin E. and Mary L. Ramsey
Karsten Randolph
Sheila Rankin
Mr. and Mrs. Joseph J. Raymond, Jr.
Dr. and Mrs. Jeff Reeve
Glenn and Joan Repple
Republic Services
Brad and Nancy Rex
Rhone-Poulenc Rorer Pharmaceuticals, Inc.
Dr. Joseph and Mrs. Jean Riley
Ring Power Corp.
Riskmetrics Group, Inc.
Richard and Shirley Risser
RLH Construction, LLC
James and Lana Roberts
Fred Robey
Richard and Gail Robinson
Robert R. Rohlf
Rosen Centre Hotel
Rosen Shingle Creek Resort
Rotary Club of Altamonte Springs #4386
Rotary Club of Bonita Naples #28929
Rotary Club of Celebration
Rotary Club of Downtown Deland - #65937
Rotary Club of Lakewood Ranch #55320
Rotary Club of Oviedo #4412
Dr. Richard and Mrs. Melissa Rouhe
Rick and Tina Rourke
Royal Oak Homes
RVR Consulting Group
The Ryan Foundation
Pamela L. Saffran
Sage Software Healthcare, LLC
Salesforce.org
San Angel Inn, Inc. Mexico-World Showcase
Sanford Airport Authority
Sanford Burnham Prebys Medical Discovery Institute
William and Andrea Sanford
Schering Plough Corporation
David and Deborah Schick
Marie T. Schmidt

Thomas and Patricia Schnick
Dr. Kerry M. Schwartz
Johanna Scott
Security 101
Lewis and Susan Seifert
Seminole County Firefighters
Sentry Management
Seretta Construction, Inc.
The Servicemaster Company
Shared Medical Systems Corporation
Cyndi Sharman
Andrew and Katie Shaw
Frank and Lisa Sheppard
Silver Spurs Club, Inc.
Stephen Silver and Sandra Grant
Thomas and Jayne Sittima
David and JoEllyn Slott
Erik Smedal
SmithKline Beecham
Dr. Vineel Sompalli and Dr. Sree J. Yalamanchili
Marley Soper
Luis Sottill Studios
Southeastern Conference of S.D.A.
Southern Union Conference of S.D.A.
Heather Spalding
Dr. Howard K. Spalding
Dr. and Mrs. Glenn Speth
St. Jude Medical
Dr. Thomas A. Stanford
Stark Investments
State Street Corporation
Eric and Darlene Stevens
J. Darin and Andrea Stewart
Dr. and Mrs. Thomas A. Stewart
Stifel
Dr. Todd Stine
Sid and Sandra Strickland
Stryker Craniomaxillofacial
Sunbelt Systems Concepts, Inc.
Sunrise Electric Of Central FL, Inc.
Super Sales Unlimited, Inc.
Swaine & Harris, PA
Symantec Corp.
Dr. Robert E. Tainsh, Jr.
Tamar Inns, Inc.
Dr. and Mrs. Damon D. Tanton
TD Bank
TECO Energy Foundation
Michael and Janine Thompson
Dr. Kevin P. and Dr. Deborah E. Thoni
Edmund and Cheryl Timberlake
Bob and Sandy Tindell
Dr. Karen Tootle
Craig and Rhonda Townsend
Dr. P. Glenn and Mrs. Emily Tremml

Dr. and Mrs. Peter Trepper
Truist
John Turner
UCF Div. of Community Relations
UnitedHealthcare Corporation
University of Central Florida Board of Trustees
US Bank
US Foods
V Foundation for Cancer Research
Valic
Valintry Services, LLC
Valerie Varano
Varian Medical Systems
VFW Post #4534
Steve and Arlene Vickers
Joannie and Bill Vincent, Jr.
Frank Viola, Sr.
Dr. Rajan Wadhawan and Dr. Pawini Khanna
Robert Wahlers
M. Jan Walker
Anne Wallace Godwin
The Walsh Group - Walsh Construction
Warranty Managers, Inc.
Waterford Lakes Town Center
The Benji Watson Cancer Foundation
Steve and Beth Weagraff
Frederick Wendt
D. Arnold Wheeler
Dr. J. William Wiand and Ms. Kathleen Bajo
Luke and Hannah Wickham
Don and Jeannette Wildman
Jon Wilkins, Jr.
Margaret McCartney & R. Parks Williams Foundation
David and Jill Williams
Merry Willis
Dorothy S. Wilson
Windsor Onix Holdings, Inc.
Thomas and Nannette Wohlwender
Dr. David L. Wood
Vivian and Barry Woods Trust
Workscapes, Inc.
WTRS Enterprises, Inc.
Wyndham
Dr. and Mrs. B. Edward Yanke
Mark Yarbrough
James and Sabrina Yonkers
Yorkshire Sales & Marketing
Z Ministries, Inc.
Zellwood Station Red Caps, Inc.
Valerie Ziesmer
Jazlyn Zombo

2022 DONORS OF \$5,000+

This list recognizes all gifts of \$5,000 or more in 2022.

22squared, Inc.	John Bocchino	Core Group Real Estate	Arthur Fedrigon and
4 Rivers Smokehouse	Matthew and Dorchia Boisen	County Line Chapter-	Sonia Glatting-Fedrigon
4Ocean PBC	Books a Million	Women of the Moose	Susan Lynn Felder IRREV Trust
4R Restaurant Group, LLC	Sam and Kimberly Boone	Robin Covello	Dr. Anthony T. Fenison
Acahand Foundation	Chris and Melita Bordner	Cox Media Group	FEP of TeamHealth
Ackley Realty, Inc.	Boston Consulting Group, Inc.	David Cox and Cynthia Woodley	Fiduciary Counselling, Inc.
Rajia and Kristen Ackley	John and Devon Boudet	Ted and Heidi Cruz	The Fields Families
Adams, Hall, Schieffelin & Smith	Greg and Aletha Braithwaite	Csuite Growth Advisors LLC	Fifth Third Bank
The Rita and Jeffrey Adler Foundation	Brasfield & Gorrie, LLC	Cushman & Wakefield of Florida, Inc.	Finrock Industries, Inc.
Dr. Tanya O. L. Agard	Kris Bratberg	Patricia R. D'Alessandro	First Horizon Foundation
AGFA HealthCare	William Bray	Richard Dandrow	First Horizon/TD Bank
Anwar Ahmed	Katharine Brice	Mark and Kelly Daniel	Stephen and Judith Flanagan
AHMG Radiology at Central Florida	Bridge To Life, Ltd.	Davis & Associates	Alan and Carol Flaumenhaft
Steven and Lee Alexander	Jeffrey and Nicki Bromme	Austin Davis	Florida Association of Free and
Align Business Advisory Services	The Brookestrong Foundation	Dick and Anne Davis	Charitable Clinics
John Allen	Brown Parker & DeMarinis Advertising	Christopher and Laura Dawkins	Florida Coalition On Donation, Inc.
Robert and Christine Allen	John and Renee Brownlow	Elizabeth Deasy	Florida Conference
John and Carolyn Alvarez	The Brumback Family	Richard Debler and Claudia De Garay	of Seventh-day Adventists
American Cancer Society	Julie Burkay	Robert and Lisa Deininger	Forest Lake Academy
Amerifactors Financial Group, Inc.	Tim and Charis Burrill	Deloitte Consulting	Scott T. Fote
AmeriTeam Services, LLC	The Bush Family	Deloitte, LLP	Fraternal Order of Eagles #3496
Niles and Vickie Andersen	Robert and Helen Cairns	Ryan and Michelle DeVos	Fraternal Order of the Eagles Aerie
Shirley Andrews	Dalia Cantor	DG Foundation	#3550
Preston Arsement	Jonathan Cantor	Andre and Arelis Diaz	Dr. Bhargav Gajjar of
The Audit Group	David and Stephanie Carmany	James Dicks and Deborah Brunton	Vishwa Robotics & MIT
Austin Commercial	City of Casselberry	Vadym Didenko	Claudio Gambin
AVCON, Inc.	Cecilia Castillo	Dr. and Mrs. Gregory D. Dietrich	Gamers Outreach
Eber and Olesea Azevedo	Central Florida Pathology	Christopher Dixon	Dr. Jimmy G. Garas
B.A.S.E. Camp Children's Cancer	Associates, PA	Daryl and Kimberly Dixon	Dr. and Mrs. Douglas E. Gearity
Foundation	Centurion Business Finance	Samuel Dixon	Deborah Gentry
M. Andrew Baber	Donald and Fonda Cerenzio	Dr. Brittany C. Dobson	Vic Giacomia
Baby Face Portraits, LLC	The Chartis Group	Dr. and Mrs. Christopher E. Dobson, II	GILEAD Sciences
Leslie Bacardi	Cheeriodicals	Dodds Family Foundation	Ginsburg Family Foundation
Kenneth and Deanna Bacon	Nancy Chen	Elise R. Donohue Charitable Trust	Go4theGoal Foundation
Bagley Promotional Products	Dr. Wayne Cheng	Dr. Elizabeth Dovec	Kim Goehring
Bainum Family Foundation	Chick-fil-A at Celebration FSU #01537	DPR Construction, Inc.	Tannis Goehring
Linda and Richard Baldocchi	Chick-fil-A at Winter Garden FSU	Dr. Phillips Charities	Todd and Melinda Goodman
David and Janice Banks	Jere and Marian Chrispens	Brian Droney	Kristine and Kevin Gowen, Sr.
Jennifer Barbone	Dr. and Mrs. John B. Chrispens	The Ferdinand and	Sarah Grafton
Andrew Barnes	Christner's Prime Steak & Lobster	Anna Duda Foundation Inc.	Graviti Solutions, Inc.
Barrister Law Firm	Kenneth H. Cisney and	Ferdinand and June Duda	GrayRobinson, PA, Attorneys at Law
Theodore and Molly Bartholow	Thelma F. Cisney Memorial Fund	Dunkin' Donuts & Baskin Robbins	Mary Greene
Dominic Bartol, III	Citizens Bank & Trust	EatingYouAlive.org	Gresham Smith
Andrew and Jayne Bassler	Citrone Foundation, Inc.	Gregory and Tricia Edris	Johnnie and Chanin Griffin
Dick and Andrea Batchelor	Robert and Cindy Citrone	John and Kimberly Ehrhard	Dr. and Mrs. Ben and Margaret Guedes
Batson-Cook Construction	David and Leesa Civiero	Dr. Justin Elikofer	Dr. and Mrs. Shady Guirguis
Steve and Jen Belflower	Michael and Allison Clark	Inga Elzey Chis Foundation	Dr. Zachary and Dr. Tiffany Hadley
Ryan and Krysten Bell	Timothy and Sheena Clark	Ingeborg Elzey	Randall and Cynthia Haffner
David and Lynell Berelsman	Clear Channel Outdoor	Epic Systems Corporation	Richard and Jessica Haines
Albert and Mary Bergeron	Coastal Mechanical Services	Lothar and Jana Estein	Kent and Mary Catherine Hamill
Beytin, McLaughlin, McLaughlin,	Karla Coble	Estes, Ingram, Foels & Gibbs, PA	Robert Hamilton
O'Hara, Kinman & Bocchino PA	David and Gena Collis	Ethicon, Inc.	Dr. and Mrs. Ted Hamilton
Dr. Michael Bibliowicz	Comprehensive Energy Services, Inc.	Dr. George D. Everett and	Dr. and Mrs. John D. Hannah
Joseph and Karen Bierer	The Contigo Foundation	Ms. Anna Lillios	Steven and Jessica Hargrove
Blackcrow	Timothy and Vivian Cook	LeeAnne Feagan	David Harris
Gloria Bocchino	Khandi Cooper		Lawrence and Tara Hatch

2022 DONORS OF \$5,000+ (cont.)

Healthcare Realty	Nick and Samira Kurji	Michael Murrill	Primrose Schools
Healthfund Solutions, LLC	Lake Mary Preparatory School	Musculoskeletal Transplant Foundation	National Support Center
Harvey and Dayna Heller	Tyler Lampe Foundation Inc.	Estate of Betty Jean Myers	Quality Labor Management, LLC
Dr. Frank and Mrs. Flossie Hellinger	Langford Family Foundation	Danny and Lisa Myers	Dr. and Mrs. Robert S. Quigley
Dr. and Mrs. Edwin I. Hernandez	Suzanne Larkin	Seema Naik	Justin Ranck
Herzing University	Trevor Lee	National Staffing Solutions	Karsten Randolph
Robert and Lynn Herzog	Life Giving Resources, Inc.	Runway to Hope and the NeJame Family	Sheila Rankin
Dr. Jo Hewell, CEO/ A.T.A.P. COMPANIES	Dr. and Mrs. Jonathan J. Linthicum	Dr. and Mrs. Scott C. Nelson	Paul and Marilyn Rathbun
Douglas and Heather Hilliard	Ross and Mandy Linville	Anthony and Sonja Nicholson	Michael and Teresa Rausch
Nigel and Melissa Hinds	Little Diversified Architectural Consulting, Inc.	Joseph and Judith Norelli	Dr. and Mrs. Jeff Reeve
Holland & Knight, LLP	Robert Loftin	North American Credit Services	John and Laura Riley
Leslie Holloway	Juan and Yolanda Londono	The Northern Trust Company Foundation	Ring Power Corp.
Dr. Robert W. Holloway	Jorge and Elizabeth Lopez	The Northern Trust Company	Monica and Johnny Rivers, Jr.
Holy Trinity Greek Orthodox Church of Greater Orlando	The Lounsberry Corporation	Sal "Joe" and Jodi Nunziata	Rizing Tide Foundation
Hope For More Foundation, Inc.	Ray Lounsberry	Etugo Nwokah	RLF Architecture Engineering Interiors
David and Erica Horn	Love Your Melon	Kyle Nylander	RLH Construction, LLC
Lars and Julie Houmann	LPL Financial	OAKZ Media	Robins & Morton Group
Matthew Howard	David and Eydie Macinnis	Michael & Colleen O'Donnell Charitable Gift Fund	Summer Rodman
In Memory of Charlene J. Pepper	James and Martha MacPhee	Kevin and Mary O'Donnell	Rotary Club of Lakewood Ranch #55320
David and Melody Huffman	Chesley G. Magruder Foundation	OneBlood	Rotary Club of Seminole County South #4418
Jacqueline & Vincent Hughes Family Foundation	Imran Malik	Orange Lake Resorts Country Club	Rotary Club of the Parks #83098
Huntington Disease Society of America	Michael and Crisa Marder	Orlando Magic, LTD	Rothman Orthopaedics
HuntonBrady Architects, PA	Market Traders Institute, Inc.	Orlando Sports Foundation	Dr. Richard and Mrs. Melissa Rouhe
HWLF, LLC	Gary and Anju Marlar	Orlando Venues	Michael D. and Rachelle C. Rouse
I-CON Systems, Inc.	Talmadge Marlar	Orlando World Center Marriott	RS&H
iHeartMedia	Mark and Kelli Martin	David and Wendy Ottati	John and Audrey Ruggieri
Impact Advisors, LLC	Massey Services, Inc.	Outfront Media	Russian Ballet Orlando
Andrea Iseman	The Harvey and Carol Massey Family	Terry and Susan Owen	Anthony M. Santelli and Diana Davis-Santelli
Jeremy and Sissel Jacob	Kathleen Masterson	Robert and Laura Owens - Owens Realty Services	Frank Santos
Dr. Jack and Mrs. Marliss Jacobson	DACG, INC. and Jamie and Heather McCandless	Oxford Advisory Group	Rodney Schwab
Andrew and Dena Jalbert	Dawn and Robert McCollum, Jr.	Rose Parapiglia	Johanna Scott
David and Judy Jang	Richard McFadyen	George Parker	Wyatt and Janell Scott
Jack Jennings & Sons, Inc.	Benjamin McKendall, Jr.	Parkinson Association of Central Florida	Seacoast National Bank
Jeff and Stacy Jennings	D. Richard Mead Charitable Foundation	Tina Patire	Security 101
James Johnson	Stanley Budge Mead	Dr. Sanjay and Mrs. Kavita Pattani	Melna Sedwick
Jeffrey and Penny Johnson	Meadows & Ohly, LLC	Dr. Daniel J. Patton	Seretta Construction, Inc.
Dr. and Mrs. Lennard Jorgensen	Medical Device Services	Pearson Doyle Mohre & Pastis, LLP	Cyndi Sharman
JP Morgan Chase Bank	The Menard Family	Amy Pena	Andrew and Katherine Shaw
Tom and Gail Kapusta	Lane Merrifield	PGGO Worksite Partners, LLC	Terry and Paula Shaw
Louis and Maria Katz	Richard B. Meyers	Phigenics	Frank and Lisa Sheppard
Dr. Moby Kazmi	Microsoft	Playing For A Cause	The Signatry
Keating & Schlitt, PA	Mid-Florida Hospital Specialists, PA	The Pleasanton Schools, LLC	Dr. Scott and Mrs. Alison L. Silvestry
John Kingman Keating and Lisa Fox Keating	David Mike and Linda Van Name	PNC Bank	Skinnerstrong Foundation, Inc.
Jeffrey and Sheila Keiner	Bob Miles and Robin Bressler	PNC Foundation	Erika Skula
Herb and Melissa Keller	Juliet S. Milligan	Dr. and Mrs. Richard E. Pratley	Sleep Management Services of America, LLC
W.K. Kellogg Foundation	Frederick and Jennifer Mohre	Pratt Family Foundation	Erik Smedal
Dr. James E. Kendrick	Mark and Cheryl Montgomery	Samuel Pratt	Mary Smith Estate Winter Park Memorial Fund
Kids Beating Cancer	Dr. David and Mrs. Sheryl Moorhead	Pricewaterhouse Coopers, LLP	Steven and Chris Smith
Damarys Kilcrease	Morgan & Morgan	Primrose School of Lake Nona	Dr. Steven R. Smith
Dr. Jeffrey G. and Dr. Lisa M. King	Todd and Shelly Morgan	Primrose School of Rochester	Southern Stone Communications
Kirchner Family Foundation Inc	The Acahand Foundation	Primrose Schools Children's Foundation, Inc.	SpaceX
Charles Knight	MSO of Puerto Rico, LLC		Dr. and Mrs. Glenn Speth
Margaret Kohn	Shannon Mungovan		Matthew and Scottie Stanchina
Dr. and Mrs. Jeffrey C. Kuhlman	Kevin D. Murphy/Moore Stephens Lovelace, PA		

Starlight Children's Foundation
William A. Steele, MD; The Steele and
Widmer Families
Clifford and Carla Stein
STERIS Corporation
Stevens Construction
Dr. Todd Stine
Dr. and Mrs. Jeffrey G. Strickland
Stryker Corporation
Stryker Craniomaxillofacial
Studio Jefre, LLC
THE SUMMER WIND FOUNDATION
Sun Life Financial
Sundance Group, LLC
SunDance Marketing Solutions
Dr. Andrew Svetly
Jeff and Alicia Sweeney
Earl Swensson Associates, Inc.

Synergy Wealth Alliance
Mario and Alicia Szewczuk
TD Charitable Foundation
Telan, Meltz, Wallace & Eide, PA
Alan Thomas
TLC Engineering for Architecture
Track Shack of Orlando
Trane U.S., Inc.
Tremco Roofing & Building
Maintenance
Dr. P. Glenn and Mrs. Emily Tremml
John Trickey
Truist
University of Central Florida
Board of Trustees
Upshot Capital Advisors
USAP Florida
Ustler Group of Companies

Valintry Services, LLC
Joan Van Lancker
Valerie Varano
Ed and Teresa Varnes
VFW Post #4534
Vishwa Robotics & Automation, LLC
Melissa Vosburg, Inc.
Jeff and Susan Vosburg
S & Z Vyas Charitable Foundation, LLC
Dr. Rajan Wadhawan and
Dr. Pawini Khanna
Robert Wahlers
M. Jan and Lawrence Walker
Eric and Jennifer Wanderleben
Erin Waris
Wayne Densch Charities, Inc.
Al and Brea Weiss
John Weiss

Wells Fargo Bank
Frederick Wendt
Thomas and Sharon Werner
Leon and Celeste West
Westbrook Service Corporation
Angelia White
Williams Family Foundation
David and Jill Williams
Peter and Linnae Williams
Winter Park Health Foundation
Clay and Brittane Worden
Mark Yarborough
Dr. and Mrs. J. Michael Yurso
Joseph Zumpano

2022 ADVENTHEALTH LEGACY SOCIETY DONORS

The AdventHealth Legacy Society list recognizes all those who have made planned and estate gifts to AdventHealth Foundation Central Florida.

Alan Abbott
Dr. Aneesa B. Ahmad
Steven and Lee Alexander
Homer N. Allen
Riley and Mary Allen
The Martin Andersen -
Gracia Andersen Foundation, Inc.
Kurt Anderson
Laurie Anderson
George and Irene Anscombe
Gordon and Betty Anthony
John Anthony
James William and Janine Arrowsmith
Donald J. and Virginia Barker
Robert Barrows
The Batchelor Foundation, Inc.
Joyce M. Bates
Cecil Battiste
Helen Ann Beam
Elizabeth Bedinger
The Bekemeyer Family
Warren and Annette Belding
Dominic and Catherine Bencivenga
Michael Benedetto
Albert and Mary Bergeron
Joseph and Geneva Bernik
Joseph and Karen Bierer
Richard and Mary Bischof
Mardian and Joan Blair
G. Thomas and Nancy Blaud

William T. and Aura W. Bland
In Memory of Alyce B. Shames
Remy and Lise Bordier
Dr. and Mrs. Robert Boswell
Hartle M. Bowness Dynasty Trust
Dr. and Mrs. J. Barry Boyd
Evelyn B. Brabson
Murray and Betsy Brooks
Buonauro Family Partnership
Estate of Louisa B. Bussing
Dr. Kenneth L. Cabreira
Rosanna and Stephen Cahill
Foundation
Robert and Helen Cairns
Beverly B. Cannon
In Honor of Mr. and Mrs. Clint Carrico
CarSue Distribution
Marion Cashman
Clara Cerar
Dr. Thomas E. Chambers, Sr.
Bradley and Lynde Chase
John and Suzan Chick
Kenneth H. Cisney and
Thelma F. Cisney Memorial Fund
Virginia Cissel
Mary Colby
Estate of Natalie Collins
David and Gena Collis
Mary H. Connors
Richard and Helen W. Cook Fund

Dr. and Mrs. Francis J. Covelli
Terry and Peggy Crum
Susan Cruze
Des and Mary Lou Cummings
Michael Damiano
Earl Davenport
Joseph T. Davey, Jr. Trust
John Davis
Donna De Armas
William C. Demetree, Jr.
Foundation, Inc.
Athina Dever
Elise R. Donohue Charitable Trust
Naomi DuBose
Estate of Ethel J. Duffett
Estate of Priscilla Cindy Duke
Joseph Durek, Jr.
Estate of Alice Dwyer
Timothy Dwyer
Charles K. Eisen
Inga Ellzey Chis Foundation
Ingeborg Ellzey
Karl and Susan Ellzey
Vivian C. Esch
Estate of Lorri Carpenter
Harold and Priscilla Fisher
Stephen and Judith Flanagan
Estate of Marguerite Smalley
Dr. Thomas G. Ford
R. Scot and Betsy Foss

Dr. and Mrs. Terry J. Frederick, Jr.
Bettie Frey
Eunice Fuller Family, LLP
Edward and Karen Gallagher
Clarence P. Geis Family Trust
Janet George
Leona Getty Trust
Ginsburg Family Foundation
Thomas Giordano
Harry and Joann Grauberger
Jean L. Green Living Trust
Henry Jewitt Greene Estate Winter
Park Memorial Fund
Dr. and Mrs. John D. Guarneri
Joseph and Beverly Gurtis
Michael and Pamela Hanley
Robert and Patricia Harper
Harper Family Charitable
Foundation, Inc.
Estate of Brenda V. Harrison
James C. Hartman
Dr. Frank and Mrs. Flossie Hellinger
Herbert Henson
A. William Hess, II
Trina Hidalgo
Hillerich & Bradsky Co., Inc.
Dr. Lynne A. Hopkins
Vincent and Jacqueline Hughes
Franklin and Cheryl Hutsell
Daniel and Wanda Ickes

2022 ADVENTHEALTH LEGACY SOCIETY DONORS (cont.)

William and Jean Iles
Karen and Jim Ingalls
Carol Jacobs
Toshiko O. Jacobs
William E. and Alice Jacobs
Dr. Ravi and Dr. Udit Jahagirdar
Andrew and Dena Jalbert
John and Louise Jennings
Mary Lou Johnson Trust
Steven and Joanne Kane
Dr. and Mrs. Rodney C. Kang
Leland Keck
Paul and Margaret Keller
J. Darrell and Carole Kelley
Jason and Angeline Khoury
Dr. Jules Klein
Estate of Kristin E. Koch
Maud H. Kraft Estate Winter Park
Memorial Hospital Fund
Kushner Companies Charitable
Foundation
Annie Dempster Kyle Estate
Pauline Lafontaine
Langford Family Foundation
Carl F. Langlas Estate Winter Park
Memorial Fund
Dennis Langone
Bobby and Liesollette Larsen
William and Ann Legg
Frederick and Victoria Leonhardt
Walter J. and Augusta S. Levy
Karen and Richard Lippert, Jr.
Jacqueline Littleford
Robert and Midge Lloyd
Brian Lyster
Estate of Coralou K. Malcom
Dallas Malloy
Walter and Jean Manley
Philip and Lucy Manley
Irene Manning
Joseph Markoly
Robert and Jean Martin
The Harvey and Carol Massey Family
Carolyn Mayo
Joe B. McCawley
Judith McKelvey

W. Floyd and Marge McRae
Bonnie Medley
Emily R. Merrill Estate
Charles and Karen Metcalf
Richard B. Meyers
Dr. and Mrs. Richard L. Milholm
Millican Family Trust
Jack and Jean Millican
Herman and Quilvie Mills
Mark and Cheryl Montgomery
Earnest Moore
Thomas P. and Jeanne L. Moran
Foundation
Glenda G. Morgan
Dr. Thomas F. Winters and
Dr. Rebecca L. Moroos
Theodore and Dorothy Morrison
Mark Morrow
Estate of Gertrude Muench
Beth Murray
Amantha Musselwhite
June Nelson
Nhu V. Nguyen and
Lena Phuoc T. Nguyen
Anthony and Sonja Nicholson
Dr. and Mrs. Roger B. Nofsinger
Sal "Joe" and Jodi Nunziata
Armond Oehlerking
Marjorie Ohlau
Edward Olszewski
Edwin and Marian Orcutt
Rose Parapiglia
Robert and Joanne Patterson
Dr. Jogi and Dr. Annapurna Pattisapu
Robert Pease
Amada Perez Living Trust
Estate of Helen May Pessirilo

Jo Ann Powell
Estate of Beatrice Prager
Ralph E. Prouty Estate Winter Park
Memorial Fund
Rosemary Purdum
Dennis and Donna Ramsey
Estate of Celia E. Ray
Robert Reiser
Leo Reuter
Dr. Cheryl S. Reynolds and
Mr. Paul R. Schweer
R. David Reynolds
Dr. and Mrs. Robert B. Reynolds
Sara Louise Ricker
Kathleen Roberts-Rossin
Peggy Robison
Jack and Peggy Rogers
Robert R. Rohlf
Anthony and Deborah Rossi
Roy Family Fund of The Greater
Cincinnati Foundation
Brooke and Patricia Sadler
Allen and Sandra Saft
William and Joan Salmons
Inez P. Shaw Estate Fund
for Winter Park
Patricia Simpson
Mary Smith Estate Winter Park
Memorial Fund
Edward Smith
Grady Smith
Pamella Smith
Bonnie Jeanne Snyder
Howard Sobin
Harold Somes
Marley Soper
Jan and Daisy Staniszkis

Dolores Stephens
Dr. and Mrs. Louis Stern
Mildred Straas
Eva Striplin
Mary Sturno
Larry Stutes
John Symbold
James and Jeraldine Tanner
Taylor Charitable Remainder Trust
Robert and Elyette Taylor
Frank and Diane Torchia
William Trickel, Jr.
Kent Trickel-Nobles
Mary Truett
Dr. Patricia and Mr. David Turner
Minoo Vaghaiwalla Rev Trust
Richard and Lucille Verdu
VinLozano Imports
David Wainwright
Jerome Wall
Wayne Densch Charities, Inc.
Thomas and Sharon Werner
Edward and Donna White
Don and Jeannette Wildman
Leonard and Marjorie Williams
Martin Williams
Peter and Linnae Williams
Gail Wiser
Thomas and Nannette Wohlwender
Allen Wooldridge, Jr.
Ellen Zervos Brown
Evelyn Zirzow

**Scan the QR code to see more friends
of AdventHealth who generously gave
to support whole-person health care.**



[AdventHealthFoundation.com/CFImpact](https://www.adventhealthfoundation.com/CFImpact)

“You will be enriched in every way so that you can be generous on every occasion, and through us your generosity will result in thanksgiving to God.”

— 2 Corinthians 9:11

Raising Hope

It was shortly after 9pm one night, and Essence could no longer ignore the pain in her back and the fever chills that made it impossible to keep working. Essence was familiar with these symptoms and suspected that she might have another kidney infection, so she drove herself to AdventHealth Orlando's Emergency Department.

An MRI showed a large mass on her kidney that was causing an infection. A biopsy resulted in a renal cell carcinoma (kidney cancer) diagnosis, which would require surgery to remove the mass.

Essence found herself in an impossible situation. She had eight children at home, and a one-month-long recovery in the hospital would keep her from working.

Essence had just started a job at AdventHealth working in Nutritional Services. Even though she had only been with AdventHealth for a short time, her team moved quickly to help her.

Supervisors and coworkers provided care during her time in the hospital by regularly checking in on her. Even the Support Cook in the patient kitchen personally fixed food trays and left encouraging notes.

To cover her financial needs, a coworker introduced her to **The Hope Fund**, a resource for AdventHealth employees who undergo a sudden and unexpected financial emergency through no fault of their own. The Hope Fund provided \$1,000 to Essence, which was the perfect amount to cover her family's needs.

Our Employee Giving Program, known as **Generosity Champions**, brings a spirit of generosity across all our campuses,



encouraging team members to participate in giving back to causes that mean the most to them.

Essence reflected on the support she received from coworkers and the financial assistance offered by The Hope Fund, **“It meant everything to me. If it wasn't for the program, what would I have done?”**

Essence continues to work at AdventHealth and is now a regular supporter of The Hope Fund, “I would recommend all employees to join Generosity Champions and give to The Hope Fund. You never know when you are going to be in need.”

AdventHealth is able to offer emergency financial assistance because of the generous donations of employees.