



Dress Code

Corporate Services Locations



AdventHealth employees are representative of our organization.

The image that you present in communication, conduct and appearance should positively represent our organization as professional and mission-focused.

Our official dress code is business casual.

Full business attire may be requested during key meetings and events.

Employees are expected to adhere to the AdventHealth dress code. Non-compliance may result in disciplinary action, including being asked to leave the workplace. Managers are responsible for enforcing the AdventHealth Dress Code with their employees.

Dress Code for Women

The dress code for women includes dresses, dress pants and dress skirts. Blazers are optional. Tops may not be sleeveless. Clothing should be modest, clean and neat at all times. It should fit appropriately and not be frayed or wrinkled. Underwear should never be exposed.

Makeup should look natural. Hair should be neatly groomed, styled, natural in color, and professional in appearance. Extreme hairstyles are not permitted.

Accessories should be limited to necklaces, earrings, wrist watches, and rings. Women may wear a single pair of matching earrings worn on the lower lobe of the ear, and they should not exceed half an inch below the earlobe. No plugs, spacers or other visible body piercings are acceptable. Women may wear one ring or wedding set per hand. Ankle bracelets and toe rings are prohibited. Any tattoos must be kept covered and not visible during work hours.

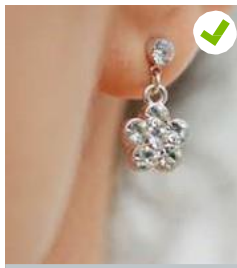
On days when the office is officially closed and your department is not scheduled to work (could apply to holidays and Sundays), you may wear modest casual attire within the office. Acceptable casual attire includes well-maintained jeans, pants, capris, shirts and casual shoes. Shorts, tank tops, sweatpants or flip flops are not acceptable attire at any time. If you have a business meeting with a guest or are otherwise instructed by your supervisor, you should revert back to business casual attire.

Dress Code for Women

Monday through Friday



Shoes and Accessories for Women



Dress Code for Men

The dress code for men includes dress pants, long sleeve shirts with buttons and collars, and dress shoes. Ties and blazers are optional. Short sleeve shirts with buttons and collars are optional on Fridays. Clothing should be modest, clean and neat at all times. It should fit appropriately and not be frayed or wrinkled. Underwear should never be exposed.

Hair should be neatly groomed, styled, natural in color, and professional in appearance. Men's facial hair should be cleanly shaved, or neatly trimmed. Men's hair should not extend beyond the top half of the ear, nor hang out over the shirt collar. Extreme hairstyles are not permitted.

Accessories should be limited to a wrist watch and one ring. No earrings, plugs or spacers, or other visible body piercings are acceptable. Any tattoos must be kept covered and not visible during work hours.

On days when the office is officially closed and your department is not scheduled to work (could apply to holidays and Sundays), you may wear modest casual attire within the office. Acceptable casual attire includes well-maintained jeans, pants, shirts and casual shoes. Shorts, tank tops, sweatpants or flip flops are not acceptable attire at any time. If you have a business meeting with a guest or are otherwise instructed by your supervisor, you should revert back to business casual attire.

Dress Code

Monday through Friday



Polos

Fridays Only



Business Formal

Key Meetings and Events



Non-Acceptable Examples

For Women



Poncho
Leggings



Denim



Capris/Shorts



T-shirt
Active Wear



Sleeveless
Attire



Mini-skirt
Short Dress

Non-Acceptable Examples

For Men



Denim Shirt
Cargo Pants

Open Shirt
Khakis/Dockers

Active Wear
Denim

T-Shirt
Khakis/Dockers

Non-Acceptable Shoes



Casual Sandal / Flip Flop



Mule / Backless



Clog

Boat Shoe

Hiking Boot

Sneaker/Athletic Shoe

General Appearance

DOs and DONTs

Earrings



Single matching pair,
worn on lower lobe



Exceeds half inch below
lower ear lobe

Necklace



One simple necklace



Excessive number and
size

Makeup



Natural looking makeup



Excessive makeup

Men's Hair



Neatly groomed hair



Hair extending beyond
top half of ear; over collar;
Extreme hairstyles



Neatly trimmed facial
hair or clean shaven



Untrimmed facial hair



Advent Health

AdventHealth.com | 407-357-1000
900 Hope Way, Altamonte Springs, FL 32714