

# Environmental Sustainability 2025 Update

At AdventHealth, our mission to extend the healing ministry of Christ calls us to care for the environments where healing happens in the spaces we build, the resources we use, and the communities we serve. Guided by our core value of stewardship, environmental sustainability means supporting both human health and the world around us.

## Emissions Inventory and Impact



**Total Emissions**  
3.65M MT CO<sub>2</sub>e



**Renewable Electricity**  
35% of System Consumption



**Inhaled Anesthetics**  
19% Decrease in Emissions

### KEY

- Scope 1 ●
- Scope 2 ●
- Scope 3 ●

AdventHealth increased reporting granularity across our emissions inventory with access to more robust data. Recalculation of 2021–2024 inventories aligned with Greenhouse Gas Protocol provided more transparent and consistent year-to-year measurement of our systemwide actions and impact.

## 2025 Highlights

### Renewable and Efficient Energy:

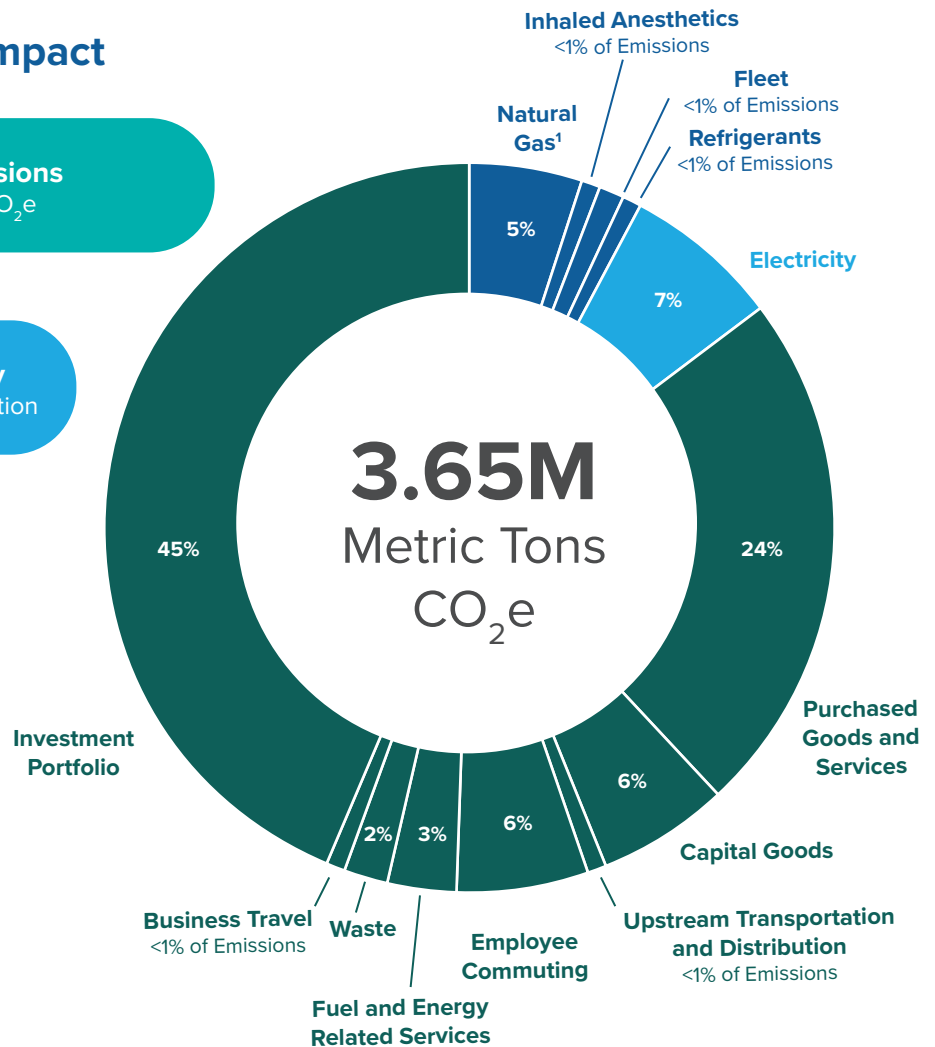
AdventHealth continued scaling renewable and efficient energy projects, including starting construction on an onsite **geothermal project at Aurora Highlands** in Colorado, completing an onsite **solar installation at the Corporate Campus**, and the **Harmony II solar array in Central Florida**.

### Systemwide Action and Impact:

Across the system, leaders and team members built localized plans to reduce environmental impact and improve facility efficiency and resilience. **More than 100 initiatives were identified**, spanning **clean and efficient energy, sustainable mobility, waste reduction and local food sourcing**.

To learn more, visit the [AdventHealth Environmental Sustainability Hub](#), or contact the Enterprise team at [CORP.Environmental@AdventHealth.com](mailto:CORP.Environmental@AdventHealth.com).

Note (1): Natural gas includes a negligible impact of propane, diesel and other fuels.



## Our Commitment

**Reduce scopes 1 and 2 emissions by 50% by 2030**

**Reach net-zero emissions across scopes 1–3 by 2050**