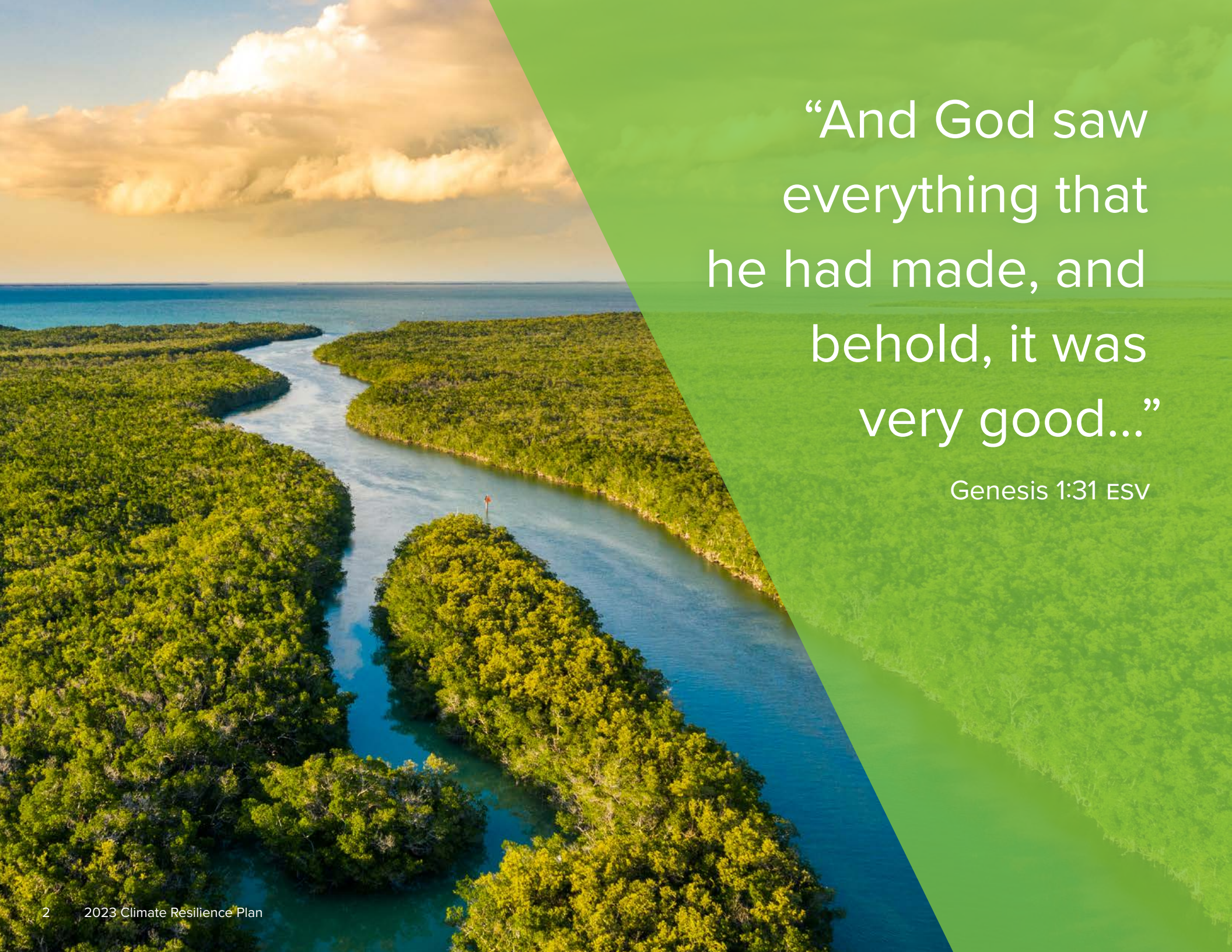


2023 Climate Resilience Plan

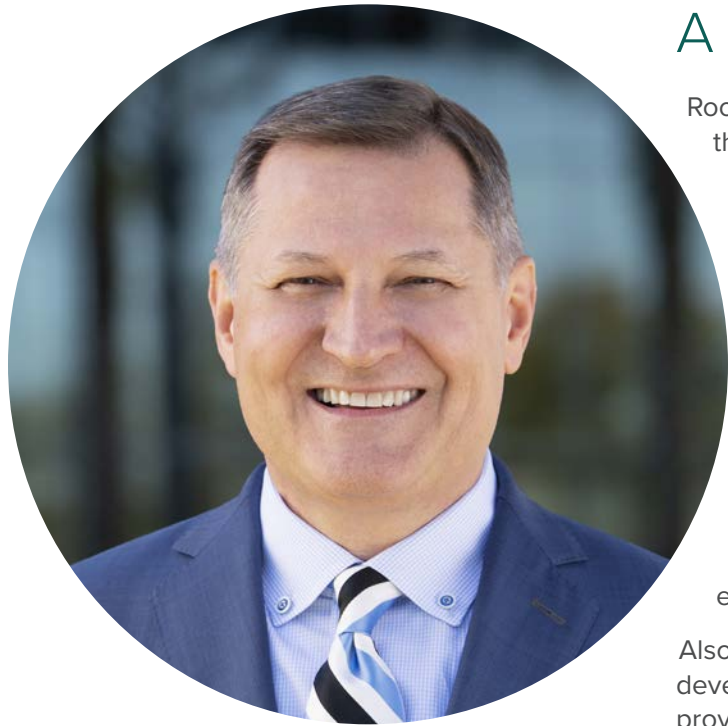


Advent Health

An aerial photograph of a lush green mangrove forest. A winding, light blue waterway cuts through the dense vegetation, leading towards the ocean in the distance. The sky is filled with large, golden-brown clouds, suggesting a sunset or sunrise. A small red marker is visible on a narrow strip of land in the waterway.

“And God saw
everything that
he had made, and
behold, it was
very good...”

Genesis 1:31 ESV



“As AdventHealth continues toward its vision of becoming a preeminent, faith-based, consumer-focused clinical-care company known for whole-person care, our environmental stewardship initiatives are clear and tangible examples of our mission in action.”

A Letter From Our CEO

Rooted in a legacy of whole-person care, AdventHealth is dedicated to its mission of Extending the Healing Ministry of Christ. This mission guides all we do and is expressed through our brand promise: to help those we serve feel whole.

Our care for the environment where our team members, consumers and community members live and work is no exception. This inaugural Climate Resilience Plan is just one example of how we are committed to thoughtfully stewarding our resources and reducing our environmental footprint to provide whole-person care more comprehensively to those we serve.

The link between the health of our communities and the planet is undeniable. As a leading United States health care provider, we have the responsibility to minimize our environmental impact. As a signatory of the U.S. Department of Health and Human Services (HHS) Health Sector Climate Pledge, a significant part of this commitment is reducing our carbon emissions by 50 percent by 2030 and reaching net-zero emissions by 2050.

Also reflected as an additional component of the HHS Climate Pledge is the development of a climate resilience plan, which is critical to ensuring we are equitably providing whole-person care.

To this end, we have consulted with leaders across our business to ensure this plan reflects our current state while strategically integrating climate resiliency in our practices, protocols, operations and readiness within our system and our communities.

As AdventHealth continues toward its vision of becoming a preeminent, faith-based, consumer-focused clinical-care company known for whole-person care, our environmental stewardship initiatives are clear and tangible examples of our mission in action. I invite you to learn more about how this work is making our communities healthier places to live.

In His Service,

Terry Shaw
President and CEO
AdventHealth

Table of Contents

5 About This Document

6 Who We Are

10 Environmental Considerations

13 Our Team Members and Facilities

14 Strengthening Our Workforce

16 Bolstering Operational Resilience

19 Our Patients and Communities

20 Advancing Health Equity for Our Patients

21 Engaging Our Communities

24 Our Service Around the World

27 Our Planet

28 Stewarding Our Natural Resources

32 Looking Ahead

34 Sources

36 Disclaimer



About This Document

AdventHealth recognizes that our commitment to delivering whole-person care must consider how well our team members, communities and global partners can adapt to changing climate conditions.

The environment impacts how our patients and team members live, work and enjoy life. It also affects our facilities' ability to provide excellent medical services. These physical spaces impact human health, as health care delivery collectively is responsible for nearly nine percent of all greenhouse gas (GHG) emissions in the United States.¹

For this reason, AdventHealth signed the HHS Health Sector Climate Pledge. The agreement requires AdventHealth to act and

advance environmental sustainability in numerous ways, including publishing a Climate Resilience Plan. This plan — informed by the below framework — aims to acknowledge how the environment impacts AdventHealth and expand on how AdventHealth helps prepare our workforce, those we serve and the world to acclimate to a changing environment.

This document — the first published by AdventHealth — represents the starting point of our climate resilience journey. We will continue to build upon the climate resilience efforts of our team members and publish additional Climate Resilience Plans in the future that outline a cohesive, comprehensive strategy that advances whole-person care.

We build a climate-resilient organization by...

- Strengthening Our Workforce
- Bolstering Operational Resilience



We manage climate-related impacts on vulnerable populations by...

- Advancing Health Equity for Our Patients
- Engaging Our Communities
- Serving Around the World

We minimize our organization's impact on the environment by...

- Stewarding Our Natural Resources

Who We Are

AdventHealth is committed to delivering whole-person care, including addressing how the environment impacts health. We operate over 50 hospitals across nine states, have a robust network of post-acute care centers and care for over seven million patients annually.

Our Mission and Values

Our values align us around a common set of beliefs and standards that inform our work and guide our behavior.

Quality and Service Excellence

We consistently deliver exceptional care and strive for excellence in all we do.

Community Well-Being

We are committed to improving the health, prosperity and well-being of the communities we serve.

High Ethical Standards

We are called to uphold the highest standards, with integrity driving every decision and action.

Stewardship

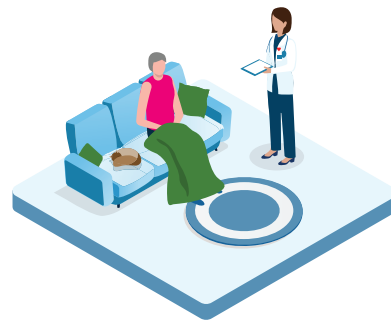
We are guided by relentless stewardship in managing the resources entrusted to us.

Inclusiveness

We celebrate the diverse backgrounds, cultures and experiences of our patients, visitors and colleagues and embrace opportunities to learn and grow from new perspectives.



50+
Hospitals



18
Home Health and
Hospice Agencies



40
Urgent Care
Facilities



90,000+
Team Members



Our values align us around a common set of beliefs and standards that inform our work and guide our behavior.



Our Service Standards

Our service standards define how we interact with every consumer and every team member who walks through our doors. Those we serve will learn our mission, vision and values through their direct experience with us.

Keep Me Safe

Through our care and our clean environments, patients and consumers will know that their safety is always our highest priority.

Love Me

Sharing our common humanity, we exhibit uncommon compassion and extend Christ's healing ministry to those we serve through genuine love.

Make It Easy

We strive to remove the complexity of health care, making it easy for our patients and consumers by meeting them where they are.

Own It

Our team members take responsibility for the person or situation in front of them.



Our Sustainability Governance Structure

Building sustainable practices that adapt to changing climate conditions requires long-term commitment and accountability from many stakeholders across AdventHealth. We established a governance structure that includes corporate and market leadership to drive our organizational sustainability efforts. Today, the Environmental Sustainability Council and working groups lead and implement the strategy with oversight from our president and CEO, board of directors and Sustainability Steering Committee. For more details about the Sustainability Governance Structure, please see our latest Sustainability Report.

Environmental Considerations

AdventHealth contends with a diverse range of climate hazards in the nine states where we operate. These hazards pose different risks to the people we serve and our facilities. The Climate Resilience Plan provides an overview of these risks to address in our efforts to deliver whole-person care.

Overall, most states where we operate face several common climate hazards. First, the expected rise in the number of days with temperatures at or above 95 degrees Fahrenheit poses a potential danger to residents.² Second, heavier precipitation in the southeastern United States raises the likelihood of cascading weather events, like flooding.³ Third, sea level rise threatens coastal regions because it can cause erosion and higher storm surges.^{4,5,6,7,8,9}

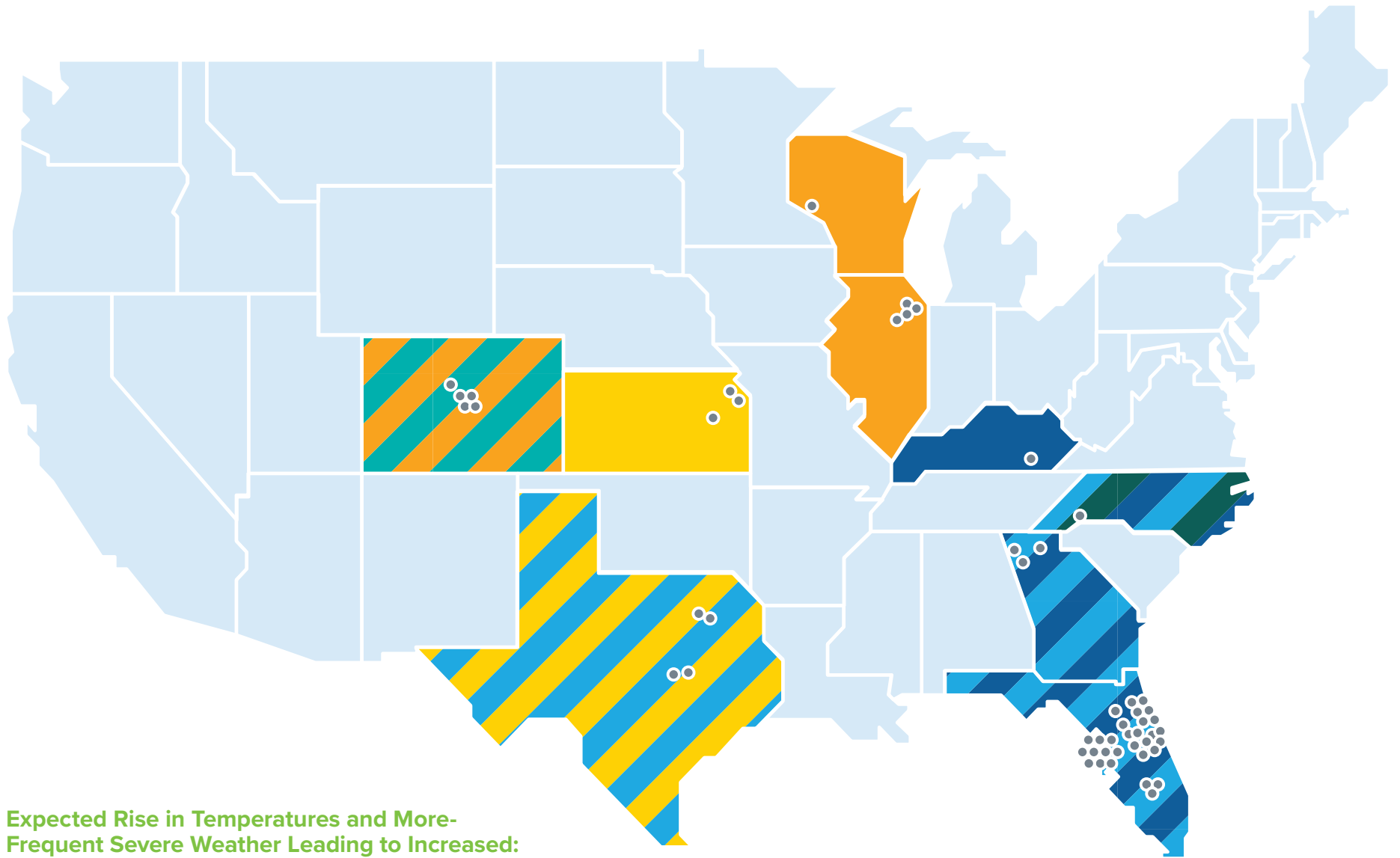
Other climate hazards also present potential threats to AdventHealth. Drought is of concern in several states.^{10,11,12} Texas recently faced a severe drought lasting from September 2021 to March 2022—the driest period in the state since 1967.¹³ The Kansas City region in Kansas also faces a risk of more severe, frequent periods of drought.¹⁴

Warmer winters wield the potential to disrupt ecosystems in historically cold weather climates. The anticipated temperature increase in the Chicago metropolitan area may increase the number of days without frost on Lake Michigan and lead to algal blooms and fish die-offs.^{15,16} Harmful algal blooms can produce waterborne toxins dangerous to human health.¹⁷

Several areas have also dealt with more-frequent severe weather, causing various downstream effects.¹⁸ In the Blue Ridge Mountains of North Carolina—where AdventHealth Hendersonville operates—flooding and landslides represent serious threats.¹⁹ Hailstorms have also increased in frequency and intensity in Boulder County, Colorado, an area AdventHealth serves.²⁰ In Kentucky, recent catastrophic flooding revealed social vulnerabilities that left residents unprepared to confront the magnitude of destruction caused by the natural disaster.²¹

These climate events threaten our patients, team members and the communities we serve for several reasons. Adults over 65—who comprise 21 percent of the population in Florida alone—face a higher risk of experiencing heat-related health problems than younger adults.²² Additionally, insurance companies opting to deny, not renew or raise premiums for flood policies leave residents burdened with the financial cost of repairing damage caused by flooding.²³ Lastly, drought concerns are exacerbated by individuals losing access to clean water due to aging infrastructure and damage caused by natural disasters.²⁴





Expected Rise in Temperatures and More-Frequent Severe Weather Leading to Increased:

- Drought
- Hail Storms
- Sea Level Rise
- Flooding
- Landslides
- Warmer Winters

Multiple stripes indicate multiple hazards.



Our Team Members and Facilities

“This is my
commandment,
that you love one
another as I have
loved you.”

John 15:12 ESV



Strengthening Our Workforce

Our team members lie at the heart of AdventHealth's service. We provide whole-person care to people, through people. AdventHealth aims to support and empower our workforce in ways that fulfill our mission to Extend the Healing Ministry of Christ. Here are some of the ways we've been addressing team-member feedback.

Family From Day One

We enable our team members to access benefits and PTO on their first day of work.

Choice of Benefits

We provide tools to support financial wellness, mental health and weight management. Additionally, team members earning less than \$21 per hour have access to a company-funded \$2,000 health savings account.

Competitive Pay

We conduct regular market analyses to ensure market-competitive salaries.

Informed and Heard

We survey team members twice a year to gain their valuable perspectives on work experience.

Lighted Career Path

We offer student loan support, educational assistance through tuition payment or reimbursement, and our Nursing Professional Excellence program that has supported over 2,200 nurses' professional growth.

Wholistic Leader

We host a Leading in AdventHealth professional development experience and offer one-on-one development conversations between team members and their leaders twice per year.



Workforce Development

AdventHealth continues to expand its community workforce development programs with a focus on high-demand skills and occupations, including green-collar jobs. Green-collar jobs are growing at an astronomical rate. According to experts, by 2030 there will be an estimated 40 million jobs in the growing renewable energy and energy efficiency industries.²⁵ Employing and partnering with local community organizations to update, modernize and retrofit resilient infrastructure creates greater operational stability and continuity, and enables workers to return sooner after an extreme weather event.

Workforce Diversity

AdventHealth recognizes the interconnection of workforce diversity and climate resilience in enabling the inclusivity, adaptability and collaboration needed to navigate challenges related to climate conditions. We actively engage with various talent pipelines to identify candidates with unique insights that could help tailor climate resilience strategies to different communities and regions. AdventHealth also develops recruiting materials that articulate environmental sustainability as one of our priorities to help attract candidates that align with this value.



Our Plan in Action

In recent years, many of our team members faced devastating losses in the aftermath of natural disasters such as Hurricane Ian, Tropical Storm Nicole, the Eastern Kentucky floods and the Colorado fires. Some lost everything. Homes, vehicles and belongings were destroyed by floodwaters, high winds or flames.

These natural disasters helped drive AdventHealth to implement a system-wide paid time off (PTO) donation program to help keep our team members whole in times of need. Our teams rallied to support each other by raising funds and donating accrued PTO to impacted team members who needed time off to address recovery needs. Our service standards compel us to support one another, thus enhancing resilience during crises.



Moving Forward for Our Workforce

AdventHealth continues to expand and mature our organizational climate resiliency in alignment with AdventHealth's broader sustainability strategy. A core element of our efforts is continuing to empower our team members to share their feedback and actively champion efforts to bolster our climate resilience. We look forward to building workforce capacity through hiring for jobs that advance climate resilience and developing a diverse workforce that is climate literate, informed by climate resilience and skilled at addressing consequent challenges.

Bolstering Operational Resilience

AdventHealth's risk management and emergency preparedness represent the front line of protection against climate conditions. AdventHealth team members in these areas are entrusted with understanding and managing climate-related risks that could threaten our organization's ability to deliver whole-person care to our patients and the communities we serve.

To prevent damage, our risk management team works with insurers to assess climate-related vulnerabilities and financially protect our physical assets—including buildings and equipment—from damage. AdventHealth's emergency preparedness teams provide support when natural disasters strike by keeping our operations uninterrupted, patients cared for and team members equipped to serve.

How We Prevent and Prepare for Disaster

AdventHealth's risk management team coordinates periodic facility inspections with insurers to identify risks and opportunities to improve operational resilience. In compliance with federal requirements, our facilities conduct disaster drills twice yearly and maintain 96-hour emergency management plans to maintain maximum readiness for disasters or emergencies.



Our Plan in Action

Severe weather and unforeseen events like the COVID-19 pandemic also affect the health care supply chain through the disruption of manufacturing plants and warehouses, and surges in demand resulting in potential shortages of supplies.

AdventHealth recently partnered with Medline, a leading medical supply manufacturer and distributor. The collaboration includes the co-development of a 300,000-square-foot consolidated service center that will house and deliver medical supplies to all AdventHealth facilities in Florida.

The partnership enables AdventHealth to access Medline's deep logistics network to strengthen resiliency and

own and manage medical inventory in an emergency or natural disaster. Both organizations' long-term mutual commitments and investments will create an environment of enhanced collaboration and innovation, while mitigating risk and strengthening supply chain capabilities.

Moving Forward for Our Operational Resilience

AdventHealth will continue taking measures to protect the continuity of its facilities and supply chain so that our team members have what they need to provide exceptional whole-person care to patients. Some of these measures will include utilizing multiple manufacturers and diversified suppliers, increasing focus on domestic and near-shore production, and partnering with other health systems and supplier partners to create a more robust supply chain.



AdventHealth will continue taking measures to protect the continuity of its facilities and supply chain so that our team members have what they need to provide exceptional whole-person care to patients.





Our Patients and Communities

“Learn to do right;
seek justice. Defend
the oppressed.
Take up the cause
of the fatherless;
plead the case
of the widow.”

Isaiah 1:17 NIV



Advancing Health Equity for Our Patients

AdventHealth's Health Equity initiative works to address health disparities — defined as preventable differences in the burden of disease or in opportunities to achieve optimal health between populations in the communities we serve.²⁶ This involves identifying populations experiencing health disparities and the root causes that drive these differences. Climate resilience is an important consideration in understanding these root causes.

How We Identify Vulnerable Populations

AdventHealth takes an intentional, data-driven, measurable approach to advance health equity. Facilities review inpatient data to identify potential disparities in clinical outcomes. Facility-level DEI councils utilize the data to select clinical areas of focus relevant to the local area and develop health equity action plans that detail interventions to mitigate identified disparities. Intentionally addressing these disparities helps increase the baseline level of self-sufficiency for those most at risk of experiencing adverse consequences due to climate.



Our Plan in Action

In partnership with the University of Missouri, AdventHealth developed a resource called the Community Drivers Dashboard that identifies correlated neighborhood factors, including climate associated with medical conditions. It also provides a composite measure of social vulnerabilities called the Area Deprivation Index. By using this tool, AdventHealth hospitals can identify the top three neighborhood factors that contribute to disparities in health outcomes. Armed with this knowledge, hospitals can develop interventions to address the root causes that lead to disparate health outcomes.

Using the Community Drivers Dashboard, several AdventHealth facilities have identified and started addressing health disparities in their communities related to diabetes. This condition impacts how the body turns food into energy. Interventions are underway, including inpatient and community actions, to support people living with the disease and prevent others from developing the diagnosis.

AdventHealth also works to prevent and treat infections driven by climate conditions in our facilities and communities. We currently operate travel clinics that enable team members and patients to receive vaccines and medications before heading overseas to areas with different climates. Clinicians have also adopted new practices to prevent hospital-associated infections — particularly those related to central lines and catheters.



Engaging Our Communities

AdventHealth works towards sustainable practices to ensure we can continue providing whole-person care to our communities. This also enables us to invest in strengthening climate resilience. Our advocacy and public policy team supports the sustainability of our health system by championing legislation, partnerships and initiatives across various levels of government.

Because of these efforts, AdventHealth engages with communities as an advocate to bolster their climate resilience. Community Health Needs Assessments (CHNAs) findings determine our systemwide community engagement strategy. These evaluations—conducted every three years—inform the local needs facilities prioritize and address. Each facility publishes a Community Health Plan to detail how to improve the selected issues.

AdventHealth prioritizes food security, housing security, workforce development and access to care—all of which impact a person’s climate resilience. When possible, the priorities align with the Healthy People 2030 framework—a national initiative designed to improve health and well-being.²⁷

Our Priorities

Food Security

Food security represents an important facet of climate resilience, as locally grown, healthy foods contain more nutrients that help keep people healthy and self-sufficient.²⁸ Locally grown food also reduces greenhouse gas emissions by shortening the food supply chain. It advances equity by helping to remove the “last mile” barrier many communities face when seeking healthier food options.²⁹

Housing Security

Housing is a crucial determinant of health, because homes are shelters that protect people from extreme weather and natural disasters. Unstable housing prevents individuals from creating attachments to neighborhoods, which also affects health.³⁰ It also represents a critical issue across every market we serve, and we lobby to acquire and protect government funding that supports housing.



Expanding Access to Care and Coverage

Improving access to medical services helps strengthen climate resiliency among the populations we serve. Under normal conditions, convenient access to quality, affordable preventive care improves human health and self-sufficiency.³¹ When natural disasters strike, the ability to quickly reach medical care saves lives.

Community Workforce Development

Strengthening our communities’ workforce bolsters climate resilience, because it provides individuals with better economic means to protect themselves against the effects of weather and climate. Well-paying jobs enable individuals to be eligible for better housing, purchase healthy foods and access medical care.



Our Plan in Action

AdventHealth supports food banks in central Florida and maintains partnerships with entities that advance food security in our communities. In April, the AdventHealth for Children’s Healthy Weight and Wellness program won a \$55,000 grant that sponsored 80 underserved children and families enrolled in the Edible Education Experience. This class series teaches participants how to grow and prepare food at home.³²

AdventHealth Hendersonville, located in North Carolina, seeks to improve housing access for individuals seeking short-term and long-term shelter. The facility will donate \$27,000 annually through 2025 to Safelight and Western Carolina Rescue Ministries to increase the number of emergency beds in the area.³³

In Illinois, UChicago Medicine AdventHealth Bolingbrook addresses barriers to care by partnering with several community organizations to provide patients and community members with opportunities to enroll in health insurance.³⁴ AdventHealth Waterman and other Central Florida Division–North facilities operate a community clinic providing uninsured residents free medical care.³⁵

Transportation represents another factor that prevents individuals from accessing care.³⁶ AdventHealth facilities Texas Health Huguley and Texas Health Mansfield are addressing this by working together to deploy mobile health units to communities where uninsured residents reside.^{37,38}

The AdventHealth Advocacy and Public Policy team has pushed legislation to improve workforce development, including increasing graduate medical education slots and funding for nursing education and allied health colleges. In the Rocky Mountain Region, AdventHealth partners with multiple state, county and local organizations to build a behavioral health workforce that reflects diversity, empowers career advancement and addresses the behavioral health provider shortages. The groups include school districts, nonprofits and public health departments.



Moving Forward for Health Equity and Our Communities

AdventHealth is committed to advancing health equity as part of our commitment to delivering whole-person care. We aim to continue our data-based approach to help facilities better understand local environments where their patient populations live, work and enjoy life to inform strategies to help those we serve feel whole.





Our Service Around the World

As an extension of our mission and affiliation with the global Seventh-day Adventist Church, AdventHealth works with faith-based organizations in 14 strategic geographical areas worldwide through Global Missions.³⁹ This department helps health systems and local communities strengthen their climate resilience via volunteer mission trips, medical equipment donations, financial investments and other activities. Although Global Missions is not an emergency relief entity, we have responded in the aftermath of natural disasters.

AdventHealth's commitment to strengthening health systems worldwide helps communities improve their climate resilience by providing equipment, supplies and volunteers to establish dependable medical care in their areas. Most of our partners are in low- to middle-income countries and are vulnerable to climate events. We are committed to supporting our partners in delivering whole-person care to their patients.

Our Plan in Action

Hopital Adventiste d'Haiti, Port-au-Prince

Global Missions works with Hopital Adventiste d'Haiti (HAH), a hospital in Haiti's capital, Port-au-Prince, to strengthen the organization's climate resilience in several ways. Our collaboration with Rotary International established a reliable source of potable water supply via a freshwater well. Additionally, a 160-solar-panel installation on the HAH building is underway that will enable the hospital to save on spending \$1,000 per day on fuel costs. The reliable source of electricity will help HAH reduce its dependence on diesel generators that are subject to fuel shortages and electricity provided on an inconsistent basis by the public utility.

The region is vulnerable to climate hazards impacting the hospital's ability to treat patients. Earthquakes pose a severe risk to HAH due to the proximity to fault lines in the Earth's crust.⁴⁰ A devastating earthquake in 2010 served as the catalyst for developing a partnership between AdventHealth and Haiti. The region is also prone to flooding and experiences heavy rainfall during tropical storms.⁴¹ Many Port-au-Prince residents reside on flood plains and in

inadequate housing that cannot withstand this amount of seismic activity.⁴²

Mission Warehouse

AdventHealth Global Missions manages a Mission Warehouse program that collects donated hospital furniture, medical supplies and equipment to send to our global partners in need. This donation program allows our partners to reallocate resources to other critical activities that would otherwise be needed to acquire these needed items. The donation of these materials helps medical providers deliver care, extends the item's life and advances environmental sustainability by reducing waste.⁴³ In 2023, more than 200 pallets of medical supplies have been donated to our partners that otherwise would have been discarded.





14+ AdventHealth Global Missions Footprints

- Chile
- Dominican Republic
- Ecuador
- Ethiopia
- Haiti
- Honduras
- Jamaica
- Nepal
- Paraguay
- Peru
- Philippines
- Rwanda
- Ukraine
- USA (Kentucky)

Moving Forward for Our Service Around the World

Reaching people, many of whom face undue burden, lies at the core of AdventHealth’s mission to Extend the Healing Ministry of Christ. By 2030, Global Missions aims to expand our global relationships to 20 countries worldwide by partnering with health care institutions that will enable AdventHealth to continue investing in sustainable, climate-resilient solutions to help these organizations provide whole-person care to their communities.

Whether it is clean water sources for a hospital in Haiti, a school in Ethiopia, generation of medical-grade oxygen at hospitals in Nepal and Peru, or voltage regulation at a hospital in Honduras, AdventHealth will continue to work to build climate-resilient systems for the benefit of the communities being served. Future projects include increasing access to clean water in remote communities in Peru, expanding emergency medical services in Honduras and establishing tomography imaging services in Nepal.



Our Planet

“The highest heavens belong to the Lord, but the earth he has given to mankind.”

Psalms 115:16 NIV



Stewarding Our Natural Resources

AdventHealth feels called to be faithful stewards of the Earth and its resources. Our actions impact the environment, just as climate affects human health. We choose to care for the planet with the same intentionality that drives AdventHealth to provide whole-person care to our patients and live out our mission to Extend the Healing Ministry of Christ. This effort is distributed across our whole organization but is most apparent in our operations. Among our 50+ hospitals and myriad of additional facilities, we can positively impact our greenhouse gas emissions footprint, waste management and water consumption. These three areas comprise AdventHealth's foundation for sustainable operations, but we recognize that our organization is dynamic and expect additional focus areas to arise.

Our Plan in Action

AdventHealth conducted a comprehensive assessment of its environmental footprint in 2021 by gathering data on procurement, investments, facility-level energy usage, waste generation, water usage, anesthetic gas consumption, fleet fuel consumption and business travel. This information enabled us to understand our system-wide environmental impact and set our emissions-reduction target aligned with the HHS Health Sector Climate Pledge. AdventHealth became a HHS Climate Pledge signatory which elevated the sustainability work throughout the company and paved the way for a 2022 environmental inventory collection and analysis.

Energy use comprises the majority of AdventHealth's operational emissions footprint. Using and purchasing electricity generated from non-renewable sources creates air pollutants that exacerbate a host of health problems, including low birth weight, cardiovascular disease and asthma.^{44,45,46}

The HHS Pledge prioritizes energy consumption to reduce signatories' environmental footprint. Therefore, AdventHealth focused on the following pathways to meet the Pledge's energy requirements: energy efficiency, onsite renewable energy generation and offsite renewable energy generation. Our annual sustainability report further details our strategy to achieve a 50 percent reduction in organizational emissions by 2030.



Among our energy consumption efforts, AdventHealth partners with utility companies nationwide to support local renewable-energy projects. Our engagement in SolarTogether, a community solar program operated by Florida Power and Light (FPL), enabled AdventHealth Daytona Beach and AdventHealth Palm Coast to source over 85 percent of their energy usage in 2022 from in-state renewable energy sources. This effort avoided the release of over 15,550 metric tons of carbon dioxide and other air pollutants into the environment.

AdventHealth recently enrolled eligible Tampa-area facilities in Sun Select, a program TECO Energy offers to source clean energy from local solar generation assets within Florida. In Colorado, AdventHealth will soon partner with utility provider Xcel Energy to source renewable energy for our Denver-area facilities from a new community solar project under development by Pivot Energy.

AdventHealth installed over 1,800 solar panels on the McRae parking garage connected to the Orlando campus. The array alone



AdventHealth feels called to be faithful stewards of the Earth and its resources. Our actions impact the environment, just as climate affects human health.



On our downtown Orlando campus, AdventHealth installed over 1,800 solar panels on the McRae parking garage that generate 1.3 million kilowatt-hours annually.



generates 1.3 million kilowatt hours annually — enough to power 70 American homes for one year. Electric-vehicle charging stations are available to team members, patients and visitors driving low- to zero-emission vehicles.⁴⁷

As AdventHealth pushes our energy-related efforts forward, we also view sustainability through conscientious consumption as an organizational priority. We will continue building our long-term strategy in this space, as we recently hired a president of design and construction to streamline our construction processes and leverage our size and scale to drive financial and sustainable construction practice improvements. Reducing the amount of waste AdventHealth generates and water we consume enables us to conserve resources and fulfill our calling as faithful stewards of the environment.

As we build our strategy, our facilities are already taking action to promote sustainable practices. AdventHealth Orlando reduces medical waste by safely reusing and donating unopened medical supplies. Contamination risks mean unopened medical items must be removed from patient rooms. We safely decontaminate these supplies for reuse or to donate to Global Missions to send to hospitals in need overseas. This effort prevents contaminated, unopened medical supplies from ending up in landfills.

AdventHealth Celebration's partnership with Freight Farms has advanced water conservation via a hydroponic farm housed within a shipping container. The space is outfitted with technology that mimics photosynthesis, provides optimal growing conditions and uses significantly less water than traditional farming. This produce is used to prepare meals for team members and visitors at the hospital's cafe.⁴⁸ The AdventHealth Celebration team is working to design a business plan to potentially expand freight farms to other AdventHealth facilities.

At our corporate campus, AdventHealth reduced our waste footprint by eliminating styrofoam and single-use plastics from our cafes and substituting them with eco-friendly compostable products. We are evaluating the potential to roll this initiative out to other AdventHealth facilities. AdventHealth is actively collecting system-wide data to measure our waste generation and water usage to inform additional initiatives that promote conscientious consumption.

Moving Forward for Our Planet

AdventHealth prioritizes sourcing renewable energy to achieve our goal of purchasing 100 percent of our electricity from renewable, low-emissions sources by 2030. Additionally, AdventHealth continues to assess further partnerships with utility companies to participate in community solar programs and support renewable energy locally. By the end of 2023, we will execute a virtual-power purchase agreement enabling AdventHealth to further offset emissions associated with energy use through large-scale renewable energy projects.

As we craft our system-wide water conservation and waste management strategy, AdventHealth will continue building on its current efforts. First, we are widening our corporate campus compostable replacements initiative to include all our facilities. Second, AdventHealth is expanding our relationship with Freight Farms to continue supporting water conservation. Lastly, we are considering composting as part of our larger sustainability strategy.



Looking Ahead

AdventHealth invests in climate resilience because our capacity to deliver whole-person care depends on the ability of our teams, patients and facilities to withstand ever-changing climate conditions.

As we move forward, we will build with intention and align our efforts in an environmentally conscious way, strengthening underserved communities and advancing health equity.

Among our patients, AdventHealth aims to start collecting data on health disparities from our outpatient populations to continue advancing health equity. We will further integrate screenings and referrals into our electronic medical records system to help clinicians better connect patients experiencing hardship to local organizations. Additionally, we seek to strengthen our ties to community organizations to deliver aid more efficiently and effectively.

Offsite and onsite renewable energy generation remains a priority area for AdventHealth. Additionally, we will develop and work toward waste management and water objectives that advance our sustainability goals.

Strengthening climate resilience aligns with our mission to Extend the Healing Ministry of Christ. AdventHealth views responsible environmental stewardship as a moral imperative as a faith-based health organization. Building climate resilience is integral to delivering whole-person care, and we look forward to continuing to support our teams, patients and communities through this work.



Sources

- 1 Rabin, A. S., & Pinsky, E. G. (2023). Reducing health care's climate impact — mission critical or extra credit? *New England Journal of Medicine*, 389(7), 583–585. <https://doi.org/10.1056/nejmp2305709>
- 2 *Heat Stress in Older Adults*. (2019, February 4). Centers for Disease Control and Prevention; Centers for Disease Control and Prevention. <https://www.cdc.gov/disasters/extremeheat/older-adults-heat.html>
- 3 Office of Policy, United States Environmental Protection Agency (2016). United States Environmental Protection Agency. Retrieved August 24, 2023, from https://www.epa.gov/sites/default/files/2016-07/documents/southeast_fact_sheet.pdf
- 4 Office of the State Climatologist. (n.d.). *Sea Level Rise*. Florida Climate Center. <https://climatecenter.fsu.edu/topics/sea-level-rise>
- 5 Harris, A. (2022, February 20). *New U.S. sea rise projections are lower but still forecast grim future for Florida*. WUSF Public Media. <https://wusfnews.wusf.usf.edu/environment/2022-02-20/new-u-s-sea-rise-projections-are-lower-but-still-forecast-grim-future-for-florida>
- 6 Climate Impact Lab. (2023, March 30). Climate Impact Map. *Climate Impact Lab*. <https://impactlab.org/map/#usmeas=absolute&usyear=1986-2005&gmeas=absolute&year=1986-2005&tab=united-states&usrcp=ssp585&usvar=tasmax>
- 7 National Oceanic and Atmospheric Administration. (2017, December 14). *Ecological effects of sea level rise in North Carolina: Maps, marshes, and management applications*. National Centers for Coastal Ocean Science. <https://coastalscience.noaa.gov/project/ecological-effects-sea-level-rise-north-carolina/>
- 8 Office of the State Climatologist. (n.d.). *Sea Level Rise*. Florida Climate Center. <https://climatecenter.fsu.edu/topics/sea-level-rise>
- 9 Harris, A. (2022, February 20). *New U.S. sea rise projections are lower but still forecast grim future for Florida*. WUSF Public Media. <https://wusfnews.wusf.usf.edu/environment/2022-02-20/new-u-s-sea-rise-projections-are-lower-but-still-forecast-grim-future-for-florida>
- 10 United States Environmental Protection Agency, What Climate Change Means for Kentucky (2016). Retrieved August 24, 2023, from <https://19january2017snapshot.epa.gov/sites/production/files/2016-09/documents/climate-change-ky.pdf>
- 11 Mid-America Regional Council. (2022, May). *Climate Risk & Vulnerability Assessment*. Mid- America Regional Council. <https://marc.org/sites/default/files/2022-05/Climate-Risk-and-Vulnerability-Assessment.pdf>
- 12 Colorado Energy Office. (E. Gordon & D. Ojima, Eds.), Colorado Climate Change Vulnerability Study (2015). Retrieved August 24, 2023, from <https://dnrweblink.state.co.us/cwcb/0/doc/202146/Electronic.aspx?searchid=f02d65b3-001a-4eb5-ae79-f08bab6ac37c>
- 13 Texas Water Development Board. (2022, April 11). *Water Weekly*. Water Data For Texas. https://waterdatafortexas.org/drought/twdb-reports/twdb_drought_report_2022-04-11.pdf
- 14 Mid-America Regional Council. (2022, May). *Climate Risk & Vulnerability Assessment*. Mid- America Regional Council. <https://marc.org/sites/default/files/2022-05/Climate-Risk-and-Vulnerability-Assessment.pdf>
- 15 Hayhoe, K., Wuebbles, D., Hellmann, J., Lesht, B., Auffhammer, M., Cherkauer, K., Croley, T., Greene, S., Holloway, T., Iverson, L., Kalkstein, L., Lin, J., Markus, M., Miller, N., Patz, J., Peters, M., Prasad, A., Ruiz, M., Schlegel, N., ... Ziska, L. (2008, September 18). *Climate change and Chicago - City of Chicago*. Chicago. https://www.chicago.gov/content/dam/city/progs/env/CCAP/Chicago_climate_impacts_report_Executive_Summary.pdf
- 16 United States Environmental Protection Agency, What Climate Change Means for Illinois (2016). Retrieved August 24, 2023, from <https://climatechange.chicago.gov/sites/production/files/2016-09/documents/climate-change-il.pdf>
- 17 United States Environmental Protection Agency. (n.d.). *Harmful Algal Blooms*. United States Environmental Protection Agency. <https://www.epa.gov/nutrientpollution/harmful-algal-blooms#:~:text=Harmful%20algal%20blooms%20can%3A,treatment%20costs%20for%20drinking%20water>
- 18 Kansas City, Kansas City, Missouri Climate Protection & Resiliency Plan (2022). Kansas City, Missouri. Retrieved August 24, 2023, from <https://indd.adobe.com/view/3e643429-e6da-428d-a6d6-00ef730388f5>
- 19 City of Asheville, North Carolina. (2018). (rep.). *Planning for Climate Resilience City of Asheville, North Carolina: Final Assessment Report*. Retrieved August 24, 2023, from https://drive.google.com/file/d/1X_Gr4eUCmkXPOzAcvyxCe-uZPkX84Byz/view
- 20 Collinge, S. (2020, November 9). *Hail is getting bigger and more frequent for Boulder County residents*. Center for Sustainable Landscapes and Communities. <https://cslc.colorado.edu/2020-trends/hail-size-is-getting-bigger-and-more-frequent>
- 21 United States Environmental Protection Agency. (2021, September 2). EPA Report Shows Disproportionate Impacts of Climate Change on Socially Vulnerable Populations in the United States. *United States Environmental Protection Agency*. Retrieved August 24, 2023, from <https://www.epa.gov/newsreleases/epa-report-shows-disproportionate-impacts-climate-change-socially-vulnerable>
- 22 *Heat Stress in Older Adults*. (2019, February 4). Centers for Disease Control and Prevention; Centers for Disease Control and Prevention. <https://www.cdc.gov/disasters/extremeheat/older-adults-heat.html>
- 23 Cho, R. (2022, November 3). *With Climate Impacts Growing, Insurance Companies Face Big Challenges*. State of the Planet. <https://news.climate.columbia.edu/2022/11/03/with-climate-impacts-growing-insurance-companies-face-big-challenges/>

- 24 Yang, J., & Mufson, C. (2023, February 5). *Why American cities are struggling to supply safe drinking water*. PBS News Weekend; PBS. <https://www.pbs.org/newshour/show/why-american-cities-are-struggling-to-supply-safe-drinking-water>
- 25 International Renewable Energy Agency, & International Labour Organization. (2021). *Renewable Energy and Jobs Annual Review 2021*. International Labour Organization. https://www.ilo.org/wcmsp5/groups/public/---dgreports/---dcomm/--publ/documents/publication/wcms_823807.pdf
- 26 Centers for Disease Control and Prevention. (2017, January 31). *Health disparities*. Centers for Disease Control and Prevention. <https://www.cdc.gov/aging/disparities/index.htm>
- 27 U.S. Department of Health and Human Services. (n.d.). *Healthy People 2030*. <https://health.gov/healthypeople>
- 28 Klavinski, R. (2018, September 20). 7 benefits of eating local foods. MSU Extension. https://www.canr.msu.edu/news/7_benefits_of_eating_local_foods
- 29 University of Wisconsin. (n.d.). *Filling the truck: Coordinating small supply chains for Last Mile Efficiencies*. Center for Integrated Agricultural Systems. <https://cias.wisc.edu/our-work/food-systems/food-transportation/filling-the-truck-coordinating-small-supply-chains-for-last-mile-efficiencies>
- 30 *Housing Instability*. (n.d.). *Healthy People 2030*; U.S. Department of Health and Human Services. Retrieved August 29, 2023, from <https://health.gov/healthypeople/priority-areas/social-determinants-health/literature-summaries/housing-instability>
- 31 U.S. Department of Health and Human Services. (n.d.). *Access to Health Services*. *Healthy People 2030*. <https://health.gov/healthypeople/priority-areas/social-determinants-health/literature-summaries/access-health-services#:~:text=Lack%20of%20health%20insurance%20coverage%20may%20negatively%20affect%20health.10%2C11%20Uninsured%20adults%20are%20less%20likely%20to%20receive%20preventive%20services%20for%20chronic%20conditions%20such%20as%20diabetes%2C%20cancer%2C%20and%20cardiovascular%20disease.>
- 32 *AdventHealth for Children program receives grant from Orlando Magic Youth Foundation*. (2023, April 13). AdventHealth; AdventHealth. <https://www.adventhealth.com/business/adventhealth-central-florida-media-resources/news/adventhealth-children-program-receives-grant-orlando-magic-youth-foundation>
- 33 *2023-2025 AdventHealth Hendersonville Community Health Plan*. (n.d.). <https://www.adventhealth.com/sites/default/files/assets/adventhealth-hendersonville-2023-2025-community-health-plan.pdf>
- 34 AdventHealth. (n.d.). *2023-2025 UChicago Medicine AdventHealth Bolingbrook Community Health Plan*. AdventHealth. <https://www.adventhealth.com/sites/default/files/assets/uchicago-medicine-adventhealth-bolingbrook-2023-2025-community-health-plan.pdf>
- 35 *Community Primary Health Clinic*. (n.d.). AdventHealth; AdventHealth. <https://www.adventhealth.com/hospital/adventhealth-waterman/community-primary-health-clinic>
- 36 Syed, S. T., Gerber, B. S., & Sharp, L. K. (2013). Traveling towards disease: Transportation Barriers to Health Care Access. *Journal of Community Health*, 38(5), 976–993. <https://doi.org/10.1007/s10900-013-9681-1>
- 37 AdventHealth. (n.d.-c). *2023-2025 Texas Health Huguley Hospital Fort Worth South Community Health Plan*. AdventHealth. https://www.adventhealth.com/sites/default/files/assets/texas_health_huguley_2023-2025_community_health_plan.pdf
- 38 AdventHealth. (n.d.-b). *2023-2025 Texas Health Hospital Mansfield Community Health Plan*. AdventHealth. <https://www.adventhealth.com/sites/default/files/assets/texas-health-hospital-mansfield-2023-2025-community-health-plan.pdf>
- 39 As of October 24, 2023.
- 40 Costello, S. (2021, October 6). *3 Questions: Understanding the Haiti earthquakes*. MIT News. <https://news.mit.edu/2021/3-questions-camilla-cattania-william-frank-haiti-earthquakes-1006>
- 41 Slegle, T., & Rubenstein, M. (2019, July 31). *Climate change in Haiti*. State of the Planet. <https://news.climate.columbia.edu/2012/02/01/climate-change-in-haiti/>
- 42 World Bank Group. (2011, April). *Vulnerability, risk reduction, and adaptation to climate change*. World Bank. https://climateknowledgeportal.worldbank.org/sites/default/files/2018-10/wb_gfdr气候_change_country_profile_for_HTI.pdf
- 43 *Programs*. (n.d.). AdventHealth; AdventHealth. Retrieved August 29, 2023, from <https://www.adventhealth.com/programs/adventhealth-global-missions/programs>
- 44 Mitku, A. A., Zewotir, T., North, D., Jeena, P., Asharam, K., Muttoo, S., Tularam, H., & Naidoo, R. N. (2023). Impact of ambient air pollution exposure during pregnancy on adverse birth outcomes: Generalized Structural Equation Modeling Approach. *BMC Public Health*, 23(1). <https://doi.org/10.1186/s12889-022-14971-3>
- 45 Centers for Disease Control and Prevention. (2019, October 11). *Asthma and air pollution*. Centers for Disease Control and Prevention. https://www.cdc.gov/nceh/multimedia/infographics/asthma_air_pollution.html
- 46 Environmental Protection Agency. (n.d.). *Air Pollution and Cardiovascular Disease Basics*. EPA. [https://www.epa.gov/air-research/air-pollution-and-cardiovascular-disease-basics#:~:text=Fine%20particulate%20matter%20\(particulate%20matter,related%20heart%20attacks%20and%20death](https://www.epa.gov/air-research/air-pollution-and-cardiovascular-disease-basics#:~:text=Fine%20particulate%20matter%20(particulate%20matter,related%20heart%20attacks%20and%20death)
- 47 *Environmental Stewardship in Action | AdventHealth*. (2023, June 12). <https://www.adventhealth.com/news/environmental-stewardship-action>
- 48 Dieppa, J. L. (2022, May 16). *Freight farm at AdventHealth Celebration provides good health and fresh produce*. AdventHealth; AdventHealth. <https://www.adventhealth.com/business/adventhealth-central-florida-media-resources/news/freight-farm-adventhealth-celebration-provides-good-health-and-fresh-produce>



Disclaimer

This report may contain statements and information that could be considered “forward-looking statements.” Forward-looking statements are not historical facts but instead represent only our beliefs regarding future events, many of which are inherently uncertain and outside our control. Forward-looking statements include, among other things, statements regarding our future financial performance, business prospects, future growth and operating strategies, objectives and results.

Actual results, performance or developments could differ materially from those expressed or implied by these forward-looking statements. With the exception of fiscal year-end information included in our audited financial statements, the information we are presenting is unaudited. Except as required by law, we undertake no duty to update the contents of this report after today.