

AdventHealth Shawnee Mission 2020-2022 COMMUNITY HEALTH PLAN



Shawnee Mission Medical Center
d/b/a AdventHealth Shawnee Mission
Approved by Hospital Board on: March 31, 2020
Community Benefit Manager: Jeanette Metzler
Jeanette.Metzler@AdventHealth.com

Extending the Healing
Ministry of Christ


AdventHealth

2020-2022 COMMUNITY HEALTH PLAN

Table of Contents

Sections	Page
Overview	3
Priority Issues to be Addressed	3
Lack of Resources to Meet Community Mental and Behavioral Needs	5
Rising Health Care Costs and Lack of Health Insurance	8
Chronic Disease Health Disparities in Communities of Color	10
Improved Pregnancy Outcomes in Wyandotte County	12
Priority Issues that will not be Addressed	14

Acknowledgements

This community health plan was prepared by Jeanette Metzler, with contributions from members of AdventHealth Shawnee Mission’s Community Health Needs Assessment Committee representing health leaders in the community and AdventHealth Shawnee Mission’s leaders.

We are especially grateful for the internal and external partners who helped guide the development of the community health plan, which will enable our teams to continue fulfilling our mission of *Extending the Healing Ministry of Christ*.

OVERVIEW

Shawnee Mission Medical Center d/b/a AdventHealth Shawnee Mission will be referred to in this document as AdventHealth Shawnee Mission or the “Hospital.”

Community Health Needs Assessment Process

AdventHealth Shawnee Mission in Shawnee Mission, Kansas conducted a community health needs assessment in 2019. The assessment identified the health-related needs of the community including low-income, minority and other underserved populations.

In order to ensure broad community input, the hospital created a Community Health Needs Assessment Committee (CHNAC) to help guide the Hospital through the assessment process. The CHNAC included representation from the hospital, public health experts and the broad community. This included intentional representation from low-income, minority and other underserved populations.

The CHNAC met throughout 2018-2019. The members reviewed the primary and secondary data, helped define the priority issues to be addressed by the Hospital, and helped develop the Community Health Plan (CHP) to address the priority issues.

The CHP lists targeted interventions and measurable outcomes for each priority issue noted below. It includes resources the Hospital will commit and notes any planned collaborations between the Hospital and other community organizations and hospitals.

Priority Issues to be Addressed

The priority issues to be addressed include:

1. Lack of resources to meet community mental and behavioral health needs
2. Rising health care costs and lack of health insurance
3. Chronic disease health disparities in communities of color
4. Poor pregnancy outcomes in Wyandotte County

See Page 5 for goals and objectives for each priority selected to be addressed.

Priority Issues Not to be Addressed

The priority issues that will not be addressed include:

1. Lack of affordable housing
2. Limited transportation options
3. Social isolation and increasing rates of depression

See Page 14 for an explanation of why the Hospital is not addressing these issues.

Board Approval

On March 31, 2020, the hospital Board approved the Community Health Plan goals, objectives and next steps. A link to the 2020 Community Health Plan was posted on the Hospital's website prior to May 15, 2020. The Community Health Plan can be found at <https://www.adventhealth.com/community-health-needs-assessments>.

Ongoing Evaluation

AdventHealth Shawnee Mission's fiscal year is January – December. Implementation of the 2020 CHP begins upon its approval by the Board. The first annual evaluation will begin from the date of implementation through the end of the calendar year. Evaluation results will be attached to the Hospital's IRS Form 990, Schedule H. The collective monitoring and reporting will ensure the plan remains relevant and effective.

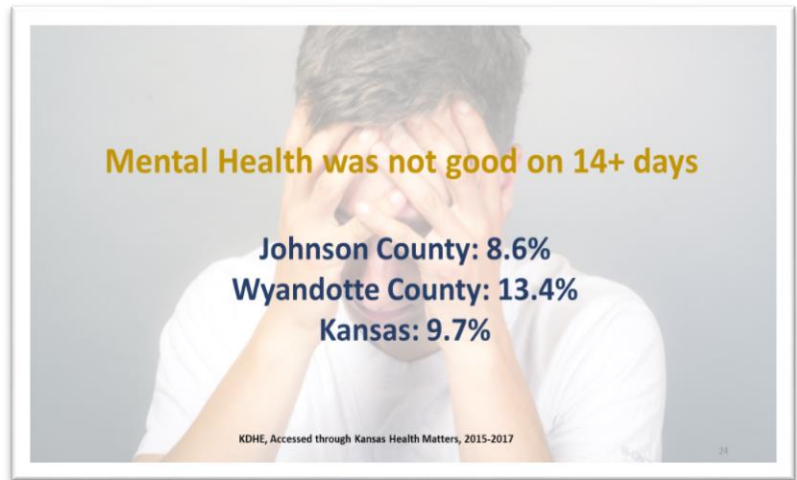
For More Information

Learn more about the Community Health Needs Assessment and Community Health Plan for AdventHealth Shawnee Mission at <https://www.adventhealth.com/community-health-needs-assessments>.

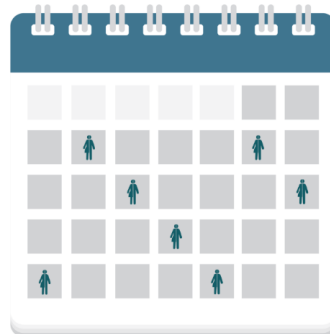
CHP PRIORITY 1

Lack of Resources to Meet Community Mental/Behavioral Needs

AdventHealth Shawnee Mission is one of the few hospitals in the Kansas City metropolitan areas that provides inpatient and outpatient mental and behavioral services. AdventHealth Shawnee Mission's Community Health Needs Assessment Survey respondents indicated high importance and low satisfaction on mental health resources. Kansas Department of Health and Environment data accessed through Kansas Health Matters (2015-2017) reports that 8.6% of residents in Johnson County and 13.4% residents in Wyandotte County indicated that mental health was 'not good' on 14+ days in the past month.



One suicide every 4 days
in Johnson County



Source: KDHE-KIC 2018

Suicide rates in Johnson and Wyandotte Counties are higher than the Healthy People 2020 goal of 10.2 suicide mortalities per 100,000. In Johnson County suicide rates continue to significantly increase in every age range with suicides for ages 15-24 at 19.7 per 100,000 and 23 per 100,000 in ages 45-64 in 2017.

Opioid Addiction: The Hospital's Community Health Needs Assessment and Key Stakeholder Survey results indicate a high importance with low satisfaction of community's *response* to the health issue of addiction to prescription/street drugs. Drug poisoning deaths are nine deaths per 100,000 in Johnson and Wyandotte Counties, with the greatest increase of deaths due to opioids.



Goal	Reduce overdoses and deaths from prescription pain and opioids
Objective	Increase referrals to the Health Partnership Clinic's new Medical Assistance Treatment for opioid dependency/Substance Abuse Program. A baseline for referrals will be established after year one with an increase of 10% per year for years two and three.
Objective	Increase the number of health professionals and community members with demonstrated skills and knowledge to recognize and respond to overdoses by including the American Heart Association's first response to drug overdose module into CPR programs in 280 programs with 1,900 participants with a baseline of zero programs and zero participants in three years.
Objective	Increase community awareness and participation in non-pharmaceutical approaches for managing pain by 15% (5% per year). The current baseline is 370 participants in Feel Whole wellness programs and Mind-Body fitness classes and 1,380 massages. Our goal is to have 90% of participants report reduced stress, anxiety or pain through post-survey.
Objective	Increase by 15% over three years the number of patients suffering from back pain who are connected to non-pharmaceutical solutions for management of back pain from a baseline established in year one.
Goal	Reduce the number of suicide attempts and deaths in Johnson County
Objective	The Hospital will provide leadership, professional expertise and community engagement to support the strategic plan of the Johnson County Suicide Prevention Coalition to reduce suicide deaths in Johnson County by 10% in three years from a baseline of 81 suicide deaths in 2019.
Objective	The Hospital will increase knowledge and skills of health professionals and community members to recognize, respond and support mental health needs (including contemplation of suicide) through hosting and financial support of the evidence-based certification programs including Applied Suicide Intervention Skills Training (ASIST) and Mental Health First Aid (MHFA) programs for 150 individuals (50 per year) over the next three years.
Objective	The Hospital will reduce suicide deaths by providing non-emergent assessments to evaluate safety risk and provide specific treatment options to 1,500 individuals over the next three years.

Hospital Contributions

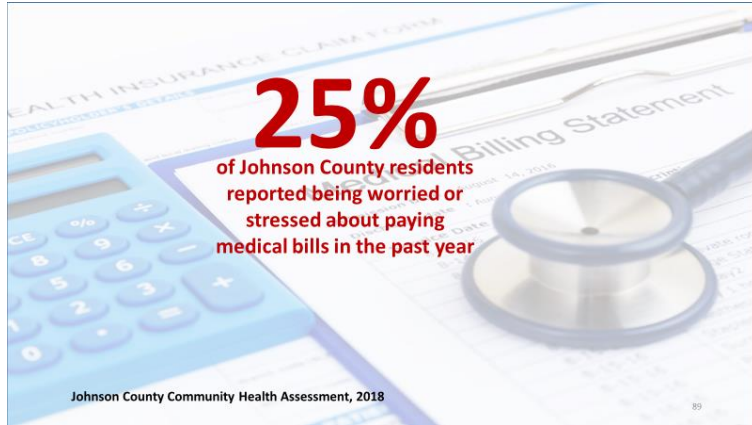
- Funding for Mental Health KC Regional Conference
- Funding to subsidize and staff to coordinate MHFA and ASIST programs
- Staff for leadership of JC Suicide Prevention Coalition
- Staff for suicide prevention community outreach and education
- Hosting community and health professional education events
- CPR site coordinator staff
- Staff for community wellness initiatives

Community Partners

- Health Partnership Clinics (FQHC)
- Vibrant Health Clinic (FQHC)
- Tri-County Mental Health
- Johnson County Suicide Prevention Coalition
- Regional Alcohol / Drug Assessment Center
- RSI Crisis Stabilization Center
- Church of the Resurrection
- American Heart Association
- Johnson County Mental Health
- Johnson County School Districts
- PT Solutions (Physical Therapy)
- Mercy & Truth Medical Missions
- Primary Care Physicians

CHP PRIORITY 2

Rising Health Care Costs and Lack of Health Insurance



The Hospital’s Community Health Needs Assessment and Key Stakeholder Surveys indicate that **Health Insurance for All** was the most important issue with the lowest satisfaction in the community’s response to this issue.

The adult uninsured rate for ages 18-65 is 11.58% in the Hospital’s service area. The Hospital’s Community Health Needs Assessment indicated 22.6% were unable to see a doctor due to cost. The 2018 Johnson County Health Assessment

indicated 25% of residents in Johnson County reported being stressed about paying medical bills.

Goal	Increase access to health insurance for low income individuals
Objective	The Hospital will sign up 150 individuals without health coverage to an appropriate health plan for those living within one mile of the intersections of 31 st and Minnesota in zip code 66102 and 75 th and Quivira in zip code 66203 in three years by hosting and sponsoring community engagement events.
Goal	Increase the number of individuals with a medical home
Objective	The Hospital will increase patient capacity for safety net clinics by 250 patients each year through financial support and patient referrals.
Objective	The Hospital will increase the number of individuals with a medical home living within one mile of the intersections of 31 st and Minnesota in zip code 66102 and 75 th and Quivira in zip code 66203 by identifying, referring and following up with an appropriate care provider for 100 individuals in three years.
Objective	The Hospital will increase the number of individuals who are up to date on preventive screenings and immunizations by providing 150 health screenings and immunizations for families living within one mile of the intersections of 31 st and Minnesota in zip code 66102 and 75 th and Quivira in zip code 66203.

Hospital Contributions

- Financial support for safety-net clinics
- Ride vouchers
- Financial support for co-pays
- Staff to plan community events
- Staff to provide screenings and immunizations and assist in establishing a medical home
- Screening supplies for events

Community Partners:

- Mercy & Truth Medical Missions
- Health Partnership Clinics (FQHC)
- Vibrant Health (FQHC)
- AHSM Cancer Committee
- American Cancer Society
- Shawnee Mission School District



CHP PRIORITY 3

Chronic Disease in Communities of Color

The Hospital's Community Health Needs Assessment Survey indicated 18% of households were worried that food would run out before they had money to buy more and 13% of ran out of food and lacked funds to purchase more in the past 12 months.

The Hospital's Community Health Needs Assessment Survey also found 14% of respondents never eat fruits and vegetables and 79% do not eat the recommended number of fruits and vegetables.

The Kansas Department of Health and Environment, Kansas Health Matter, 2015-2017, indicates hospital admission rates for diabetes, stroke, heart disease and congestive heart failure are significantly higher for people of color.



Goal | Increase access to healthy food for low income families

Objective | The Hospital will sign up 75 new individuals for food assistance programs in three years for families living within one mile of the intersections of 31st and Minnesota in zip code 66102 and 75th and Quivira in zip code 66203 by hosting and sponsoring community engagement events.

Objective | The Hospital will provide financial support and food donations to not-for-profit organizations that focus on increasing access to healthy food in low food access areas.

Goal | Increase knowledge, improve lifestyle behaviors and provide support to prevent and manage chronic disease in the Hospital's community

Objective | The Hospital will increase health knowledge and/or improve health behaviors in participants of Feel Whole classes, Move-4-Life monitored fitness programs, Living In Vitality Women's Health Conferences and chronic disease support groups by increasing participation by 5% per year and consistently demonstrating a 90% response from participants indicating new knowledge, improved health or behavior change. The 2019 baseline is 2,700 participants.

Objective | The Meals with Skills program will increase access to healthy food for 150 low-income families and demonstrate a 90% increase in knowledge in three years for those living within one mile of the intersections of 31st and Minnesota in zip code 66102 and 75th and Quivira in zip code 66203.

Hospital Contributions

- Staff for coordination of Partners' in Produce
- Staff for implementation of Feel Whole and Move-4-Life
- Instructor expenses
- Funding for Meals with Skills
- Community benefit manager's time



Community Partners

- Shawnee Community Services Food Pantry
- Shawnee Mission School District
- Pathfinder's Refugee Team Leaders
- Mercy & Truth Medical Missions
- Harvester's Food Bank
- Dotte Mobile Market

CHP PRIORITY 4

Improving Pregnancy Outcomes in Wyandotte County



The infant mortality rate in Wyandotte County is seven per 1,000 live births with the highest number of infant deaths occurring among the Black community.

In Wyandotte County 27% of expecting mothers received no or late prenatal care. In Wyandotte County, 8.5% of mothers smoked during pregnancy.

Goal | Reduce the number of infant deaths in Wyandotte County

Objective	The Hospital will increase knowledge of the community on how to provide a safe environment that supports infants reaching their first birthday in good health through implementation of Every Baby to 1, a faith-based initiative, and will demonstrate a 60% increase of knowledge from pre-test to post-test in three African-American faith communities in Wyandotte County.
Objective	The Hospital will provide support to the community for 7,500 expecting and new parents by providing a free 24-7 phone number to call with questions or support and facilitation of support groups in the next three years.
Objective	The Hospital will provide support for mom's experiencing postpartum depression by identifying expecting and new moms at risk, referring to resources and facilitating support groups and individual conversations by increasing the number served by 15% over the next three years from a baseline of 6,700 in 2019.
Objective	The Hospital will provide support through leadership and professional expertise for not-for-profit and governmental organizations with strategic goals to reduce pre-term births in Wyandotte County.

Hospital Contributions

- Birthing Center staff for implementation of expecting and new parent support services
- Birthing Center and Community Benefit manager's leadership and expertise for community collaborations addressing infant mortality and pregnancy outcomes in Wyandotte County
- Financial support for community initiatives
- Costs associated with hosting programs and support groups

Community Partners

- Community Health Council of Wyandotte County
- Every Baby to 1 Collaborative
- Children's Mercy Hospitals
- Cradle KC Community Collaborative
- United Government of Wyandotte County
- Vibrant Health (FQHC)
- Mercy & Truth Medical Missions
- March of Dimes



PRIORITIES THAT WILL NOT BE ADDRESSED

The Community Health Plan also identified the following priority health needs that will not be addressed. These specific issues and an explanation of why the Hospital is not addressing them, are listed below.

Issue 1: Lack of Affordable Housing

- Our community survey indicated 7.3% didn't know or had concern they may not have stable housing in the next two months. The Stakeholder and Johnson County Community Survey identified the availability of affordable housing as a high priority with low satisfaction on the community's response. While the Hospital did not include affordable housing as one of our top four issues to be addressed, the Hospital will continue to engage and support the efforts of United Community Services and other agencies that are currently working on this issue.

Issue 2: Limited Transportation Options

- Johnson County is a sprawling county with minimal access to public transportation. Many neighborhoods are not walk-bike friendly. Less than 1% of AdventHealth Shawnee Mission's service area uses public transportation and 6.9% reported lack of transportation as a barrier to health care. The Hospital provides ride vouchers for patients and will continue to support and advocate for community initiatives to improve transportation issues in our community.

Issue 3: Social Isolation and Increasing Rates of Depression

- Greater than 1-in-5 indicated they often feel isolated either often or some of the time in the Hospital's community survey. There are a wide variety of available social support opportunities including churches, libraries and community centers. The Hospital provides a wide range of support groups and social support services. Social connectedness is considered in the development of our Community Health Plan.